

Experience the Difference: A New Level of Clarity

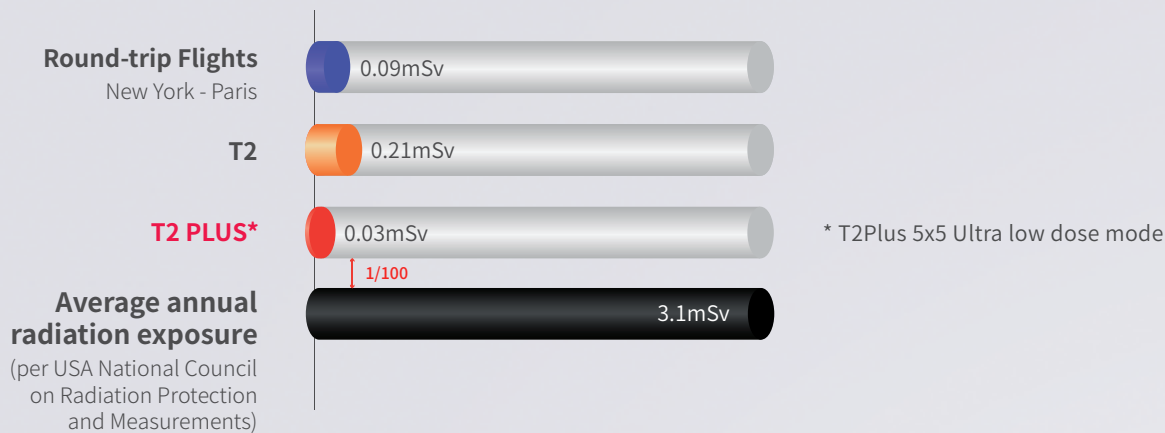
T2 Plus

- Ultra-low Radiation Dosage (80% less than Previous Model)
- Rapid Scanning (10 seconds)
- Superior Resolution
- AI Powered 3D Software for Effective Diagnosis

HIOSEN
IMPLANT

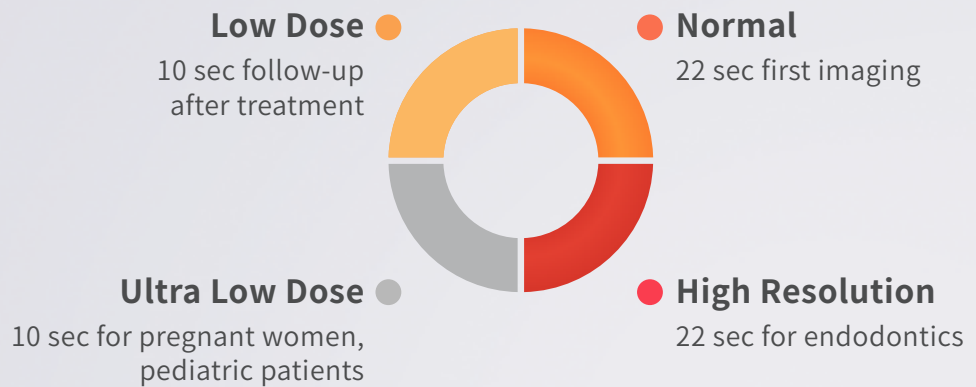
Ultra-low Radiation Dosage

- 100 times lower radiation dose than natural exposure



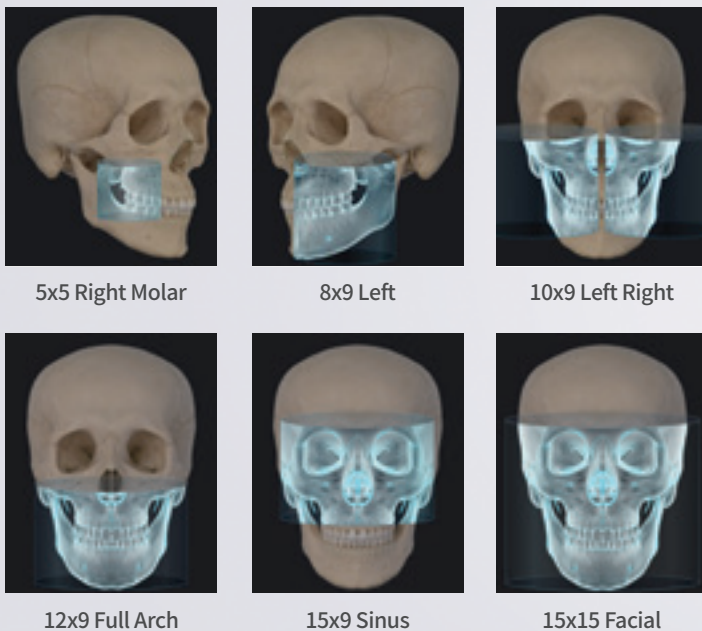
4 Imaging Options

- Depending on the diagnostic intent, you can choose the optimal acquisition time and radiation dose

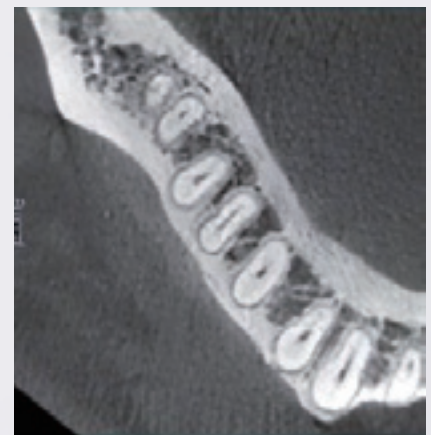


Multiple FOV : 5x5, 8x9, 10x9, 12x9, 15x9, 15x15

- Imaging size and location can be selected to suit your diagnostic needs



0.05mm Voxel Size



T2 PLUS FOV 5X5
0.05mm

Color



Blue

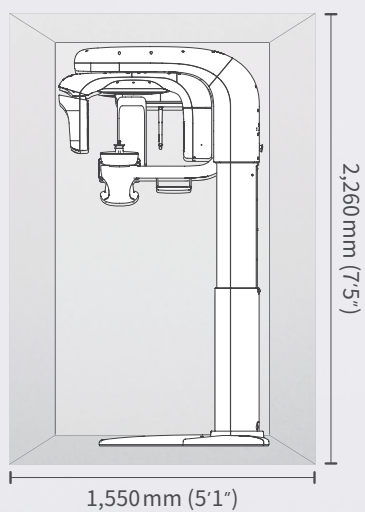
Red

White

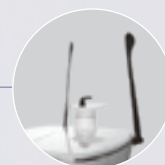
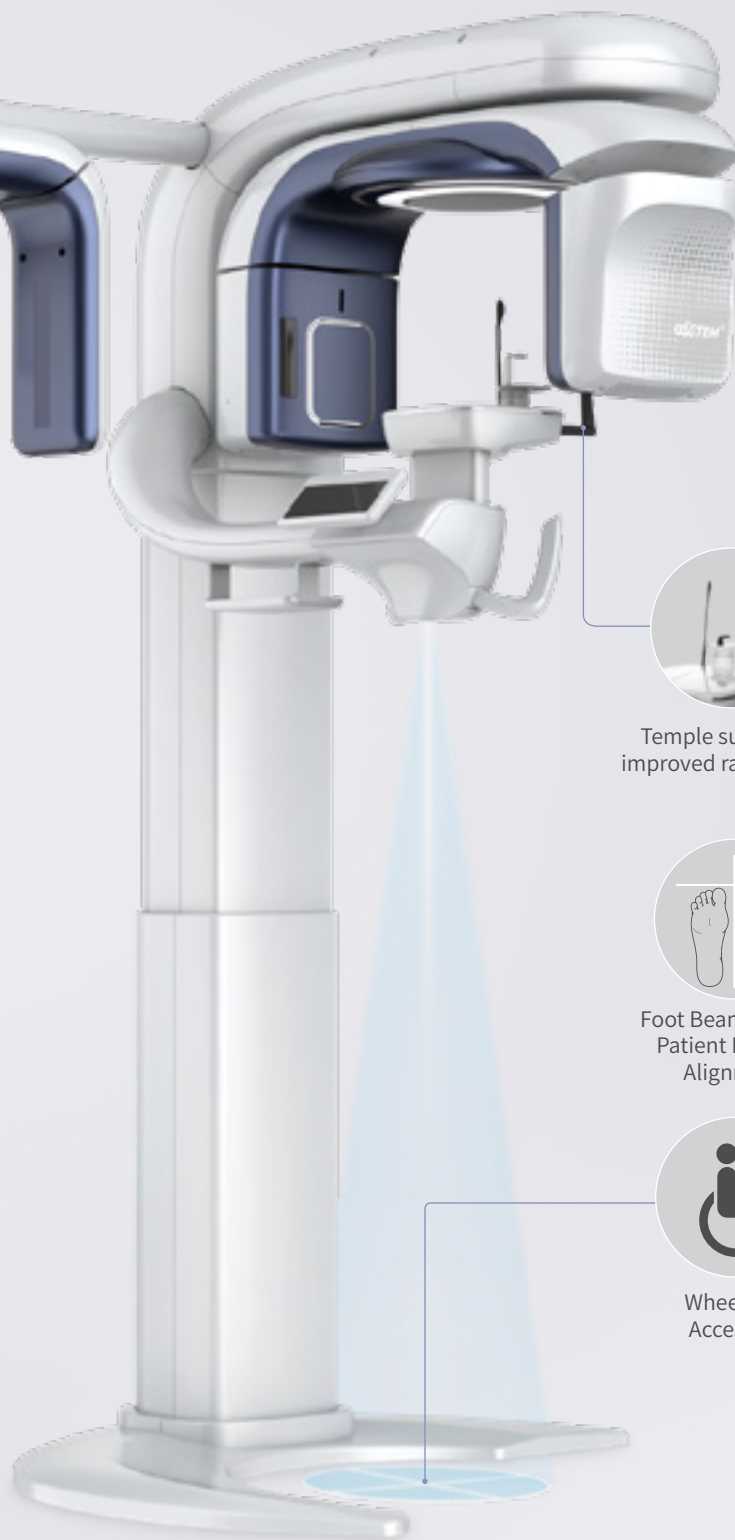
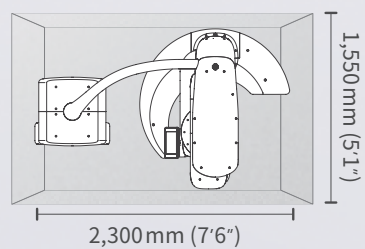
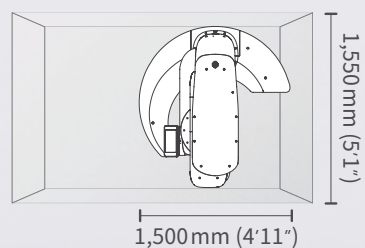
HiOSSEN

IMPLANT

Side



Top



Temple support for improved radiolucency



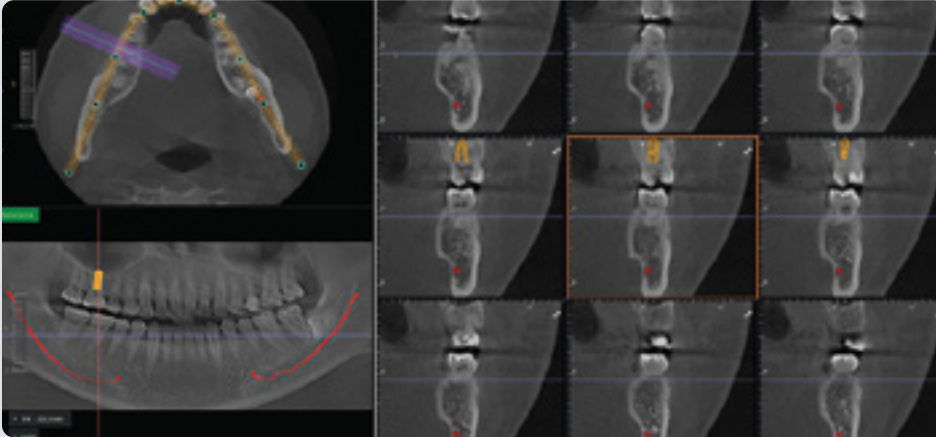
Foot Beam for Easy Patient Position Alignment



Wheelchair Accessible

AI-powered Smart 3D Viewer

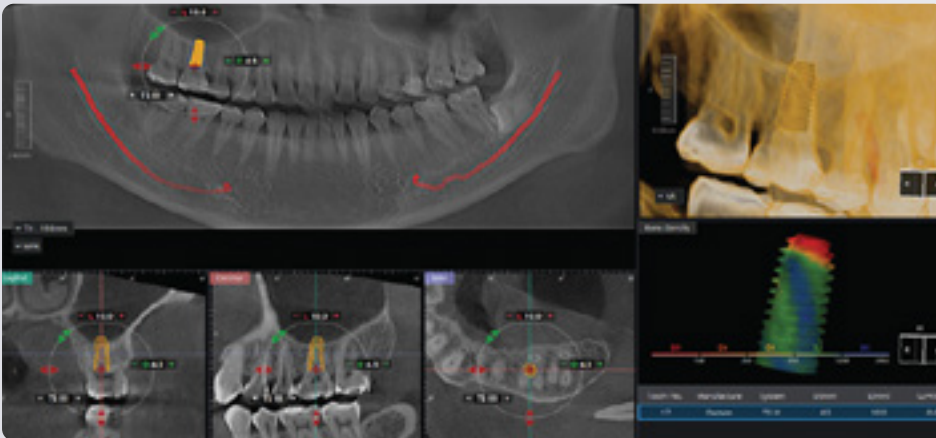
- Convenient and precise diagnoses are now just a click away, as the new AI feature automatically traces the dental arch and inferior alveolar nerves



◀ AI empowered dental arch creation and auto nerve tracing

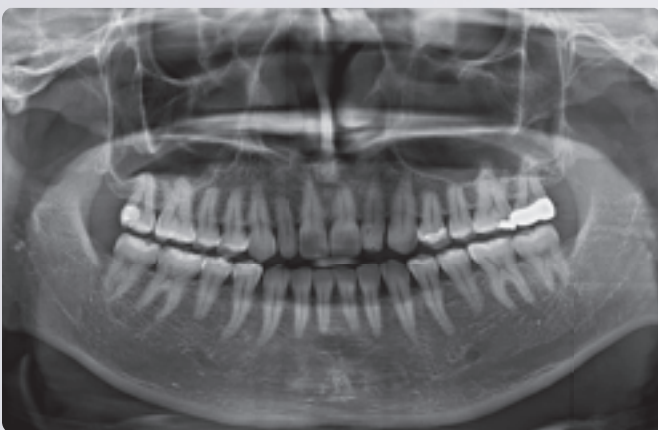
Optimized Implant Simulation: Intuitive 3D Viewer

- Enhanced implant simulation to provide user-friendly 3D diagnosis



◀ One3 Software - Implant placement simulation

Panoramic



Cephalometric

