

INTRODUCING ZCORETM EXPAND

expandable collagen-enriched porcine xenograft

- Prevents risks of membrane dislodging or particulate washout
- Resorption Profile: implant placement at 18 - 20 weeks post extraction grafting
- No membrane required



hydrated

dry

hydrated

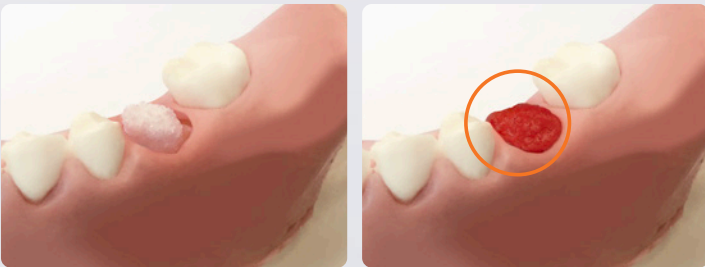
Expandable Xenograft Collagen

- Composed of 65% porcine xenograft particulate and 35% porcine collagen by volume
- Made from porcine collagen and porcine graft material, sharing the same material origin
- Commonly used for extraction site grafting and sinus augmentation through the lateral approach

Zcore Expand Function



Hydrates and expands almost immediately when introduced to the patient's blood or sterile saline



Once hydrated, it increases in diameter to fill the void space in a socket or sinus defect

65% Porcine xenograft particulate

35% Type 1 expandable porcine collagen

100X

Zcore Expand Specification (3 Types)



Socket

5 mm x 17 mm | 10 mm x 17 mm EXPANDED

| ZXSOCKET (1 per box) | ZXSOCKET-5 (5 boxes bundle)



Small Sinus

13 mm diam. x 10 mm | 17 mm x 10 mm EXPANDED

| ZX SINUSS (1 per box)



Large Sinus

17 mm diam. x 12 mm | 22 mm x 12 mm EXPANDED

| ZX SINUSL (1 per box)



INTRODUCING ZCORETM FORM

moldable collagen-enriched porcine xenograft

- A composite of osteoconductive bone mineral and collagen



Xenograft Collagen Bone Block

- Composed of 80% porcine xenograft particulate and 20% porcine collagen by volume sharing the same material origin
- Its moldable consistency allows it to conform to the shape of the defect
- Offers easier and more convenient handling compared to particulate grafts

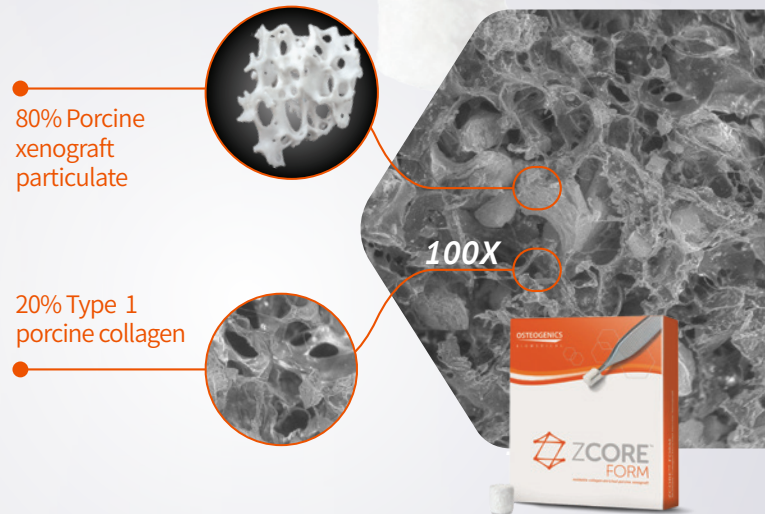
Zcore Form Function



Hydrates almost immediately when introduced to the patient's blood or sterile saline



Once hydrated, it becomes moldable and can take the shape of a variety of defect shapes and sizes



ZcoreTM Form Moldable Collagen-Enriched Porcine Xenograft



0.5 cc

9 mm diam. x 8 mm
| ZF050 (1 per box)



1.0 cc

11 mm diam. x 12 mm
| ZF100 (1 per box)



2.0 cc

11 mm diam. x 22 mm
| ZF200 (1 per box)