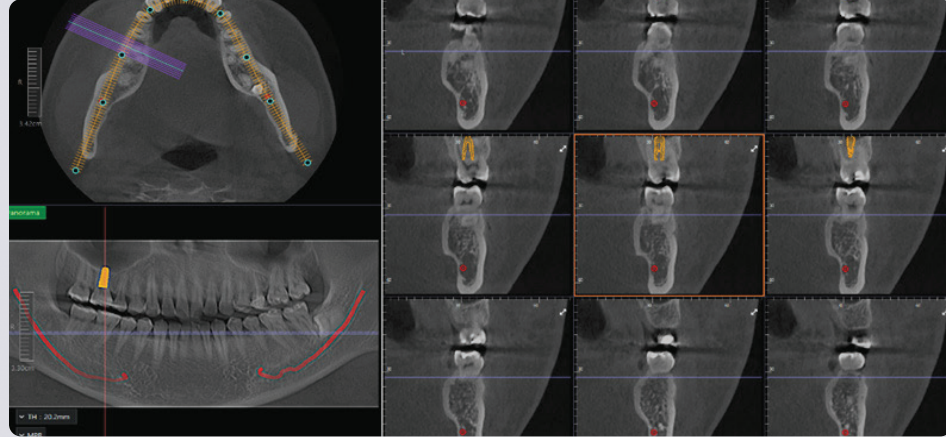


### AI-powered Smart 3D Viewer

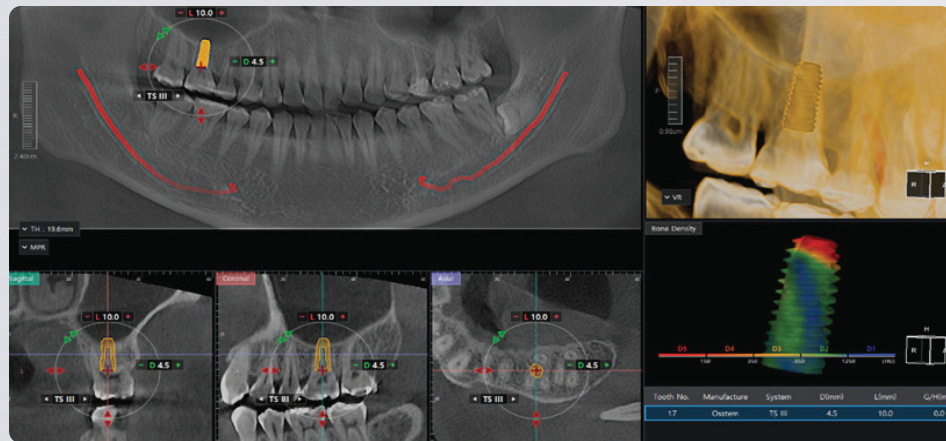
Convenient and precise diagnoses are now just a click away, as the new AI feature automatically traces the dental arch and inferior alveolar nerves



AI empowered dental arch creation and auto nerve tracing

### Optimized Implant Simulation: Intuitive 3D Viewer

Enhanced implant simulation to provide user-friendly 3D diagnosis

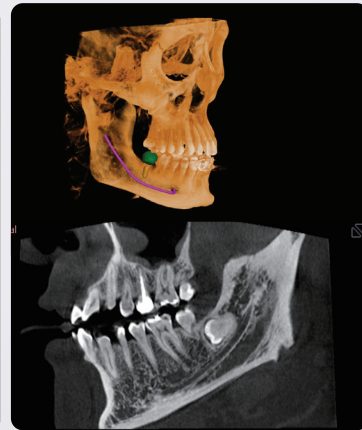


One3 Software - Implant placement simulation

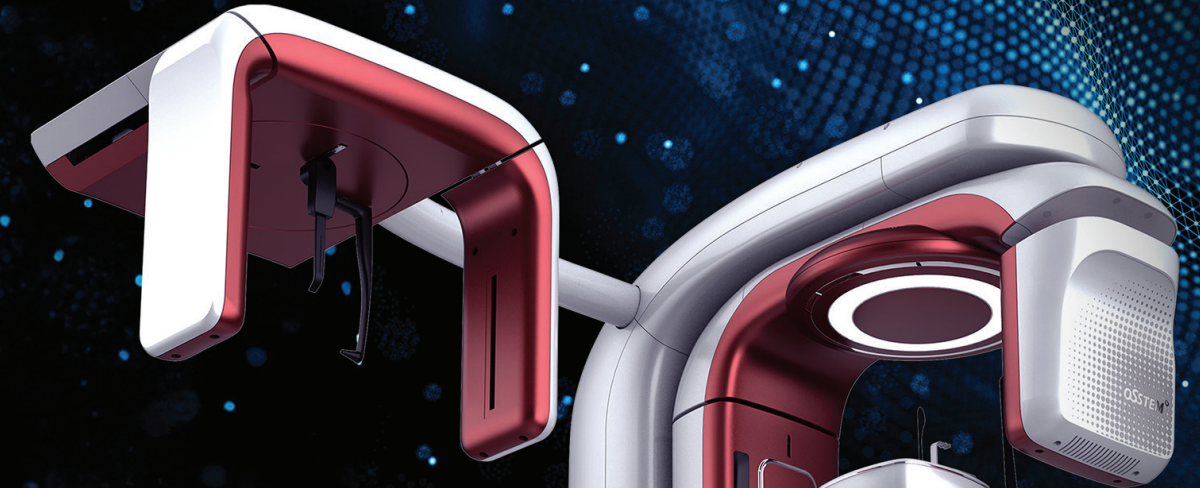
### Panoramic



### Cephalometric



# HIOSSEN IMPLANT



# T2 Plus

Experience the Difference  
A New Level of Clarity



• Fast Scanning Time



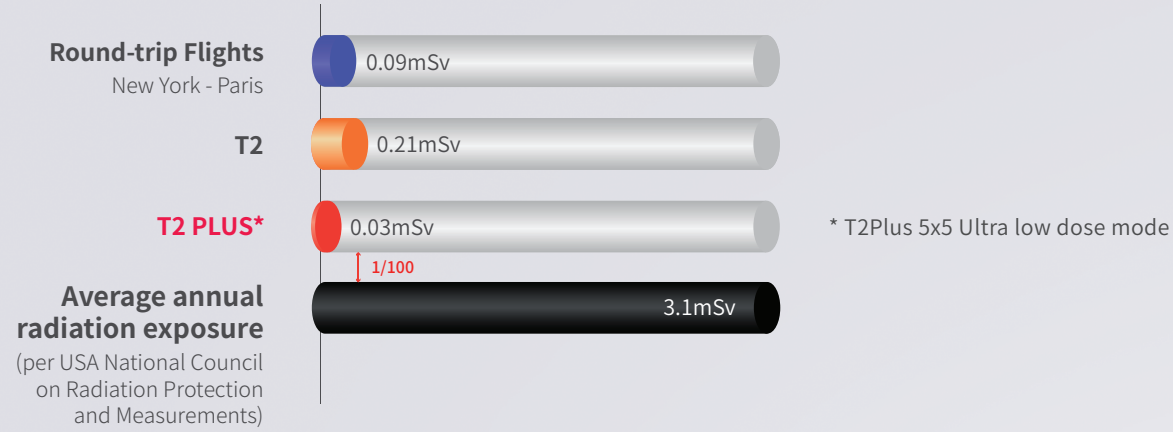
• Fast Scanning Time



• Superior Resolution  
• AI Powered 3D Software for Effective Diagnosis

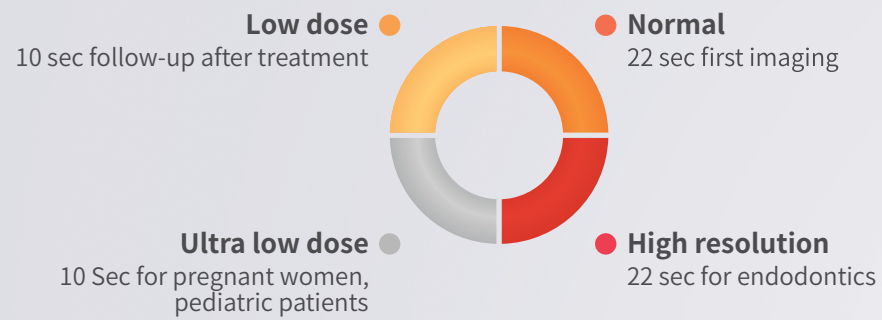
## Ultra-low Radiation Dosage

100 times lower radiation dose than natural exposure



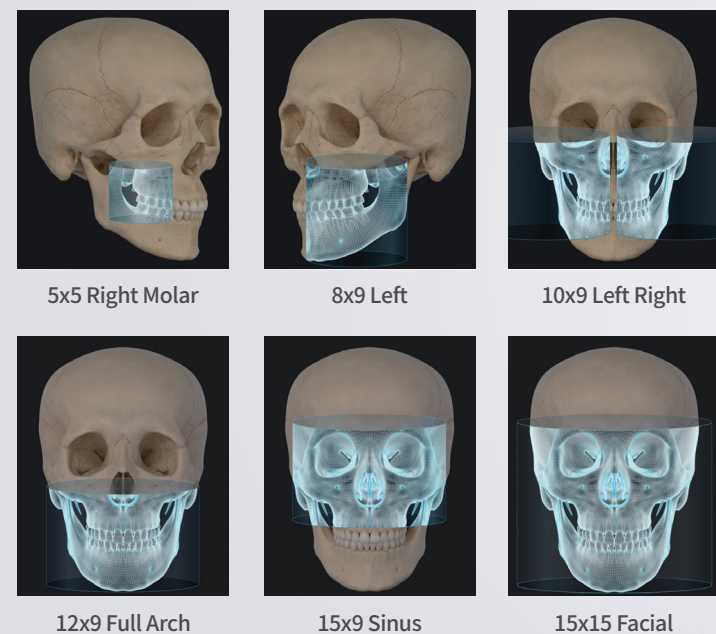
## 4 Imaging Options

Depending on the diagnostic intent, you can choose the optimal acquisition time and radiation dose

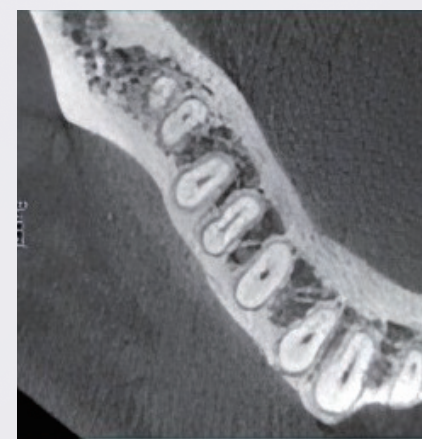


## Multiple FOV : 5x5, 8x9, 10x9, 12x9, 15x9, 15x15

Imaging size and location can be selected to suit your diagnostic needs



## 0.05mm Voxel Size



T2 PLUS FOV 5X5  
0.05mm

### Color

