



Providing confidence with accurate measurement and data

IS4

- Reduce treatment time
- Manage challenging cases with predictable outcomes
- Accurate and reliable measurement

HiOSSEN
IMPLANT

ISQ Resonance Technique

- The magnetic pulses causes the peg to vibrate, and the vibration is a result of the stiffness present in the contact region between the bone and the implant surface
- The MultiPeg™ experiences vibration when exposed to magnetic pulses, and the IS4 device detects and quantifies this vibration frequency, converting it into an Implant Stability Quotient (ISQ) value ranging from 1 to 99. A higher ISQ value indicates greater implant stability.
- Resonance Frequency Analysis (RFA) measures implant stability based on interface stiffness, which correlates with implant displacement or micro-mobility.
- High level of stability is recommended for one-stage implant surgeries and immediate loading (Above 70)
- Implants with low or decreasing ISQ values may have a higher risk of implant failure compared to those with high or increasing values.



Reusable MultiPeg™

MultiPegs are crafted using titanium and feature sealed magnets, allowing them to be reused up to 20 times. The primary focus of their design is twofold: prioritizing environmental considerations and ensuring cost-effectiveness.



MultiPeg™ (Titanium)

- Compatible with most implant systems
- Durable and tissue friendly peek material
- Autoclavable up to 20 times
- Optimal platform fit
- ISQ Standard calibrated

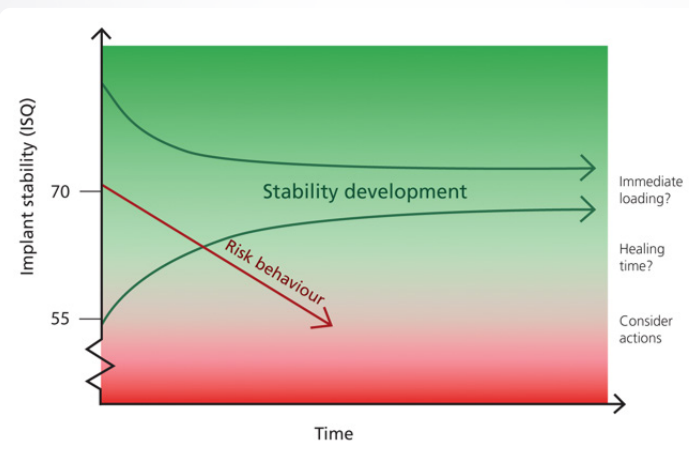


MultiPeg™ Driver

- Can be autoclaved at least 100 times
- Autoclavable
- Screwdriver and carrier

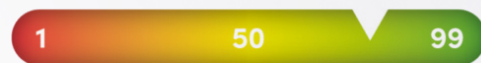
Treatment guidance and predictability

Raise the implant success ratio with accurate diagnostics



Values above 70 on the ISQ scale indicate high stability and are generally recommended for one-stage implant surgery and immediate loading. This range of ISQ values suggests that the implant has achieved a level of stability that allows for successful immediate loading.

The ISQ Scale



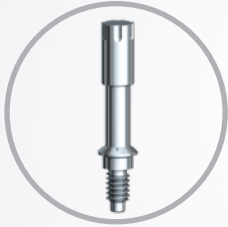
High Risk Area*

- Bruxism 71.7%
- Diabetes 71.4%
- Immediate Loading 77.5%
- Iliac Crest Block + GBR + Sinus Graft 50%
- Surgeons <5 years experience had 5x failure

The IS4 offers comprehensive information that proves crucial in determining the optimal loading time. This becomes especially vital during procedures with shorter treatment times or when dealing with at-risk patients with compromised bone conditions. Having this valuable data allows for more informed decisions and enhances the overall treatment process for these specific cases.

Using the IS4 system and practical use

- Turn on the IS4 and hold the unit close to the top of the MultiTipeg™. The instrument tip sends a signal that causes magnetic pulses within the MultiTipeg™ to resonate at a specific frequency, which is then detected by the unit. The result will be shown on the LED display.
- By taking multiple measurements and considering both the buccal and lingual aspects, clinicians can obtain a more accurate evaluation of the implant stability.



Step 1

Select the appropriate MultiTipeg™ that matches the specific implant system



Step 3

Turn on the IS4 and hold the tip of the device close to the top of the MultiTipeg™



Step 2

Attach the MultiTipeg™ manually using the driver, applying a torque of 6-8 Ncm



Step 4

The device will emit a beeping sound when the measuring process begins, and another sound follows a few seconds later when the ISQ value is shown on the LED display

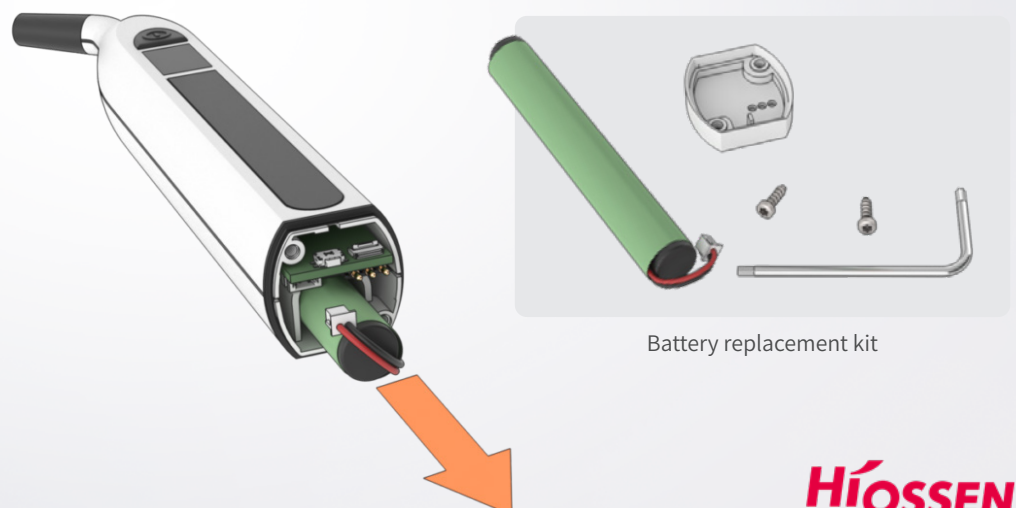


New Design for the IS4

- New ergonomic design for more comfort
- Updated LED display
- User friendly wireless charging with charging stand

The Battery Replacement Kit

The battery replacement kit includes screwdriver, screws, battery pack and the battery lid. Ensuring a seamless and hassle-free replacement process.



Battery replacement kit

HIOSSSEN

IMPLANT

Smiles that last a lifetime

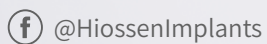


Please contact your local sales representative or visit our website today to learn more about Hiossen and its products.



All Hiossen Implants are processed and
Manufactured in the USA

270 Sylvan Ave. Ste 1130, Englewood Cliffs, NJ 07632
Marketing@hiossen.com | 888.678.0001 | www.hiossen.com



Copyright © 2025 Hiossen Inc. All rights reserved.

All information included herein is subject to change without notice. No part of this brochure may be reproduced in any manner without the prior written permission of Hiossen Inc. Hiossen and the Hiossen logo are trademarks of Hiossen Inc. All other brand or product names are trademarks of their respective companies or organizations.