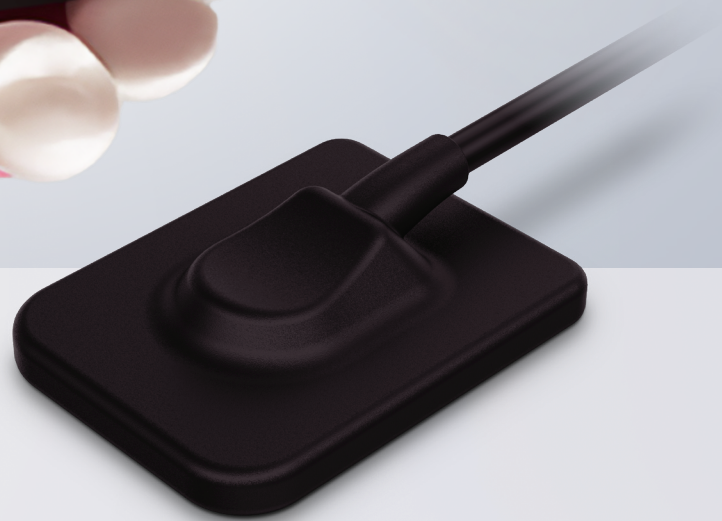




The most convenient intraoral
sensor for implant identification

Pluto

- 16bit clear image allows for easy implant identification
- Enhancement of connection stability through the use of its signal amplifier (control box)
- Provides easy operation and quick image acquisition with the thinnest intraoral sensor in the market



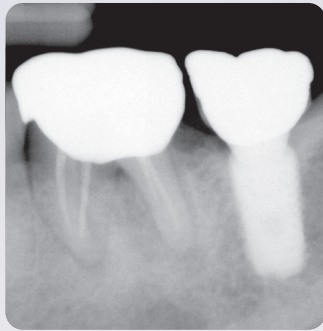
HIOSSEN
IMPLANT

16Bit Clear Image

- Capture clear images for easy implant identification



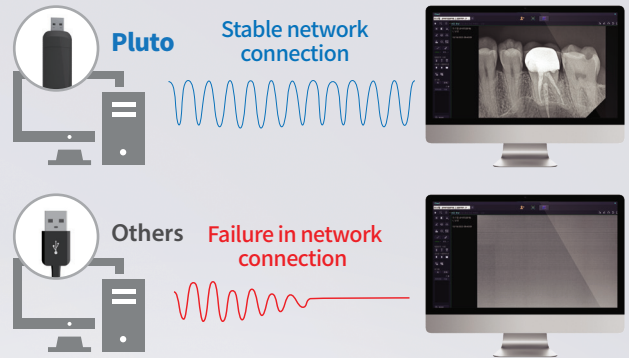
16Bit



14Bit

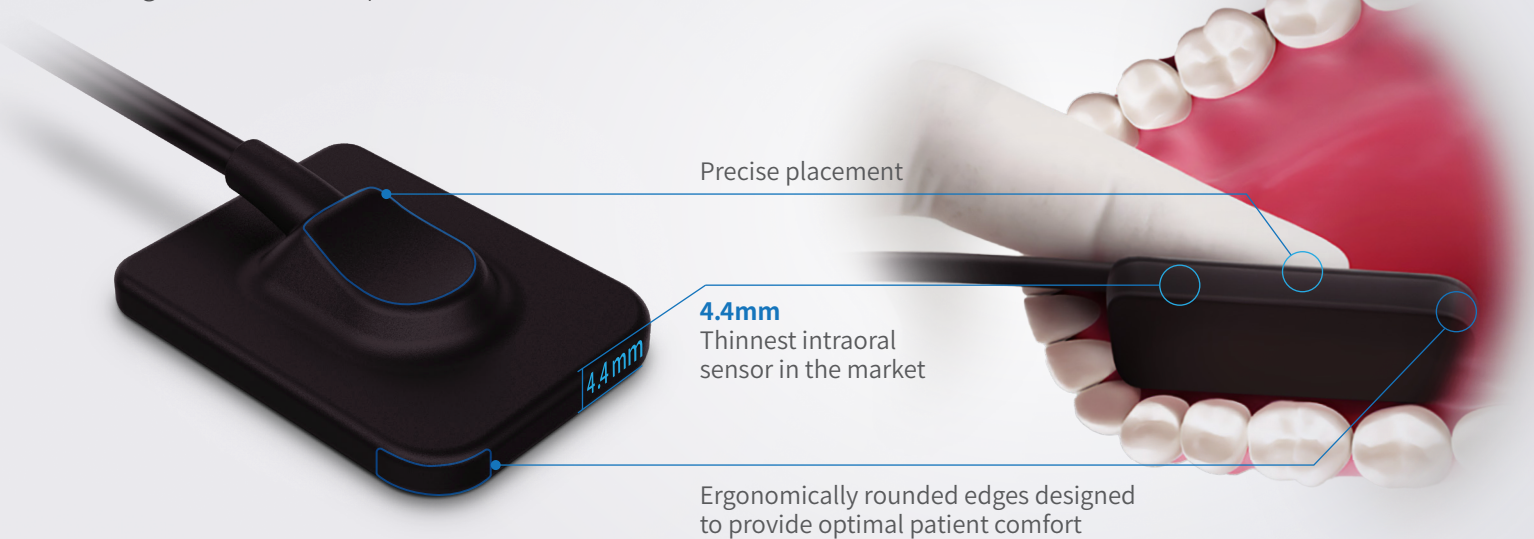
Stable Connection with a Signal Amplifier

- Ensures that images are saved without failure



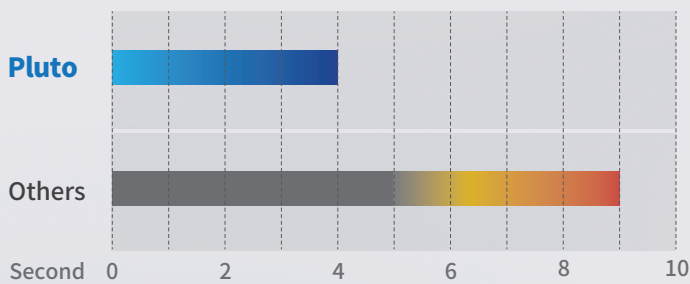
Optimal Patient Comfort

- Designed to minimize patient discomfort



Quick Image Acquisition

- Image processing speed of 4 sec



Check (Verify) implant connectivity success

