

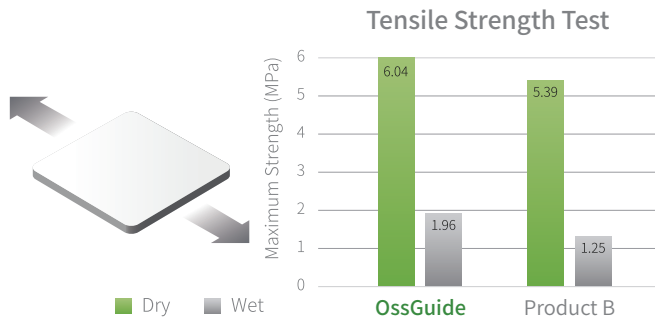
Absorbable Collagen Membrane

OssGuide

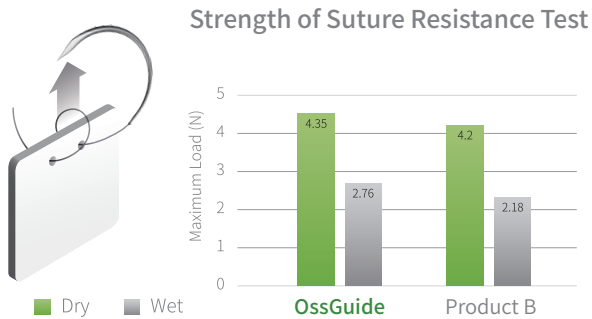
- Easy to handle and has excellent adaptation to surface contour
- Supports new bone formation and soft-tissue healing
- Functions as a bioresorbable scaffold and excellent barrier

HIOSSEN
IMPLANT

Easy to handle and has excellent adaptation to surface contour



- The tensile strength prevents from tearing and enables stability of adhesion to the bone defect area
- Utilized indiscriminately on both sides, prior to or following hydration

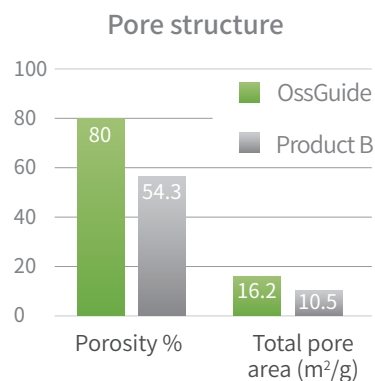


- The membrane can with stand the forces exerted by sutures
- The cross-linking type I collagen membrane

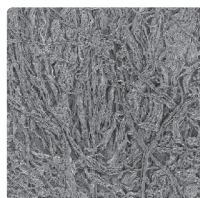
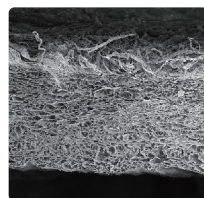


Supports New Bone Formation and Soft-tissue Healing

- Multi-pore structure enhances rapid blood supply, expediting the process of new bone generation



Tissue Integration



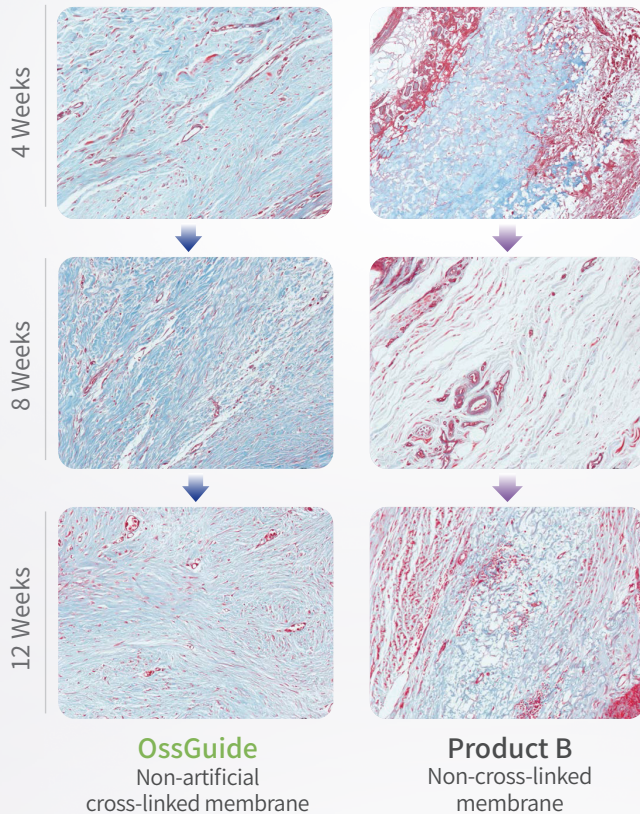
Soft tissue Healing



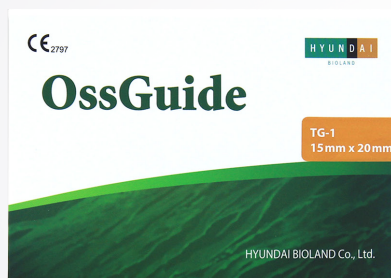
Functions as a bioresorbable scaffold and excellent barrier

- Cross-linked highly purified collagen
- Facilitates soft tissue healing and effectively maintains the ridge as a barrier

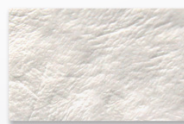
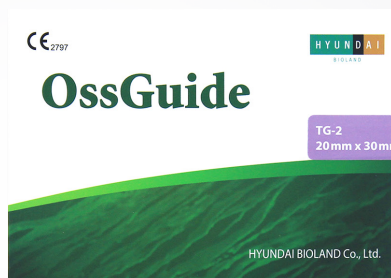
Collagen membrane resorption test
(Canine model) MT staining test



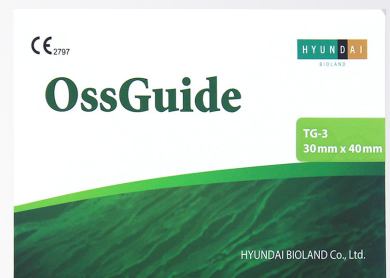
- During the testing period, the collagen fiber of OssGuide maintained initial thickness and length
- On the other hand, the collagen fiber of Product B became shorter and thinner at weeks 4
- After a duration of 12 weeks, it is observed that Product B exhibits thinner and shorter collagen fibrils in comparison to the OssGuide



TG-1
15mm x 20mm



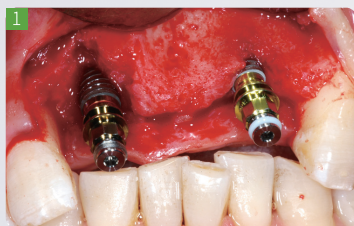
TG-2
20mm x 30mm



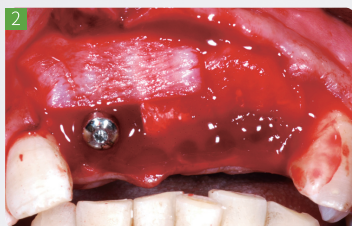
TG-3
30mm x 40mm

Clinical Case

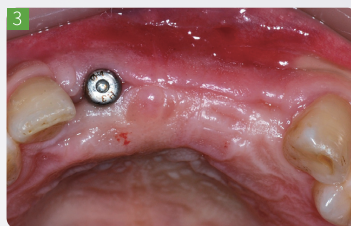
Dehiscence



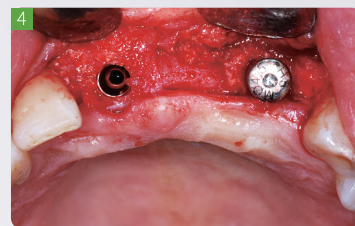
1 Large buccal dehiscence defect



2 Apply OssGuide to the defect



3 Excellent soft tissue formation



4 4 months post-op

Fenestration Defect



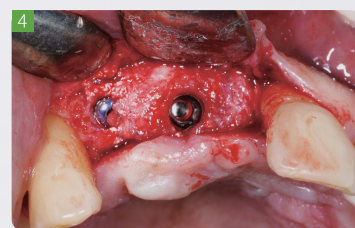
1 Large buccal dehiscence & fenestration defect



2 Apply OssGuide to the defect

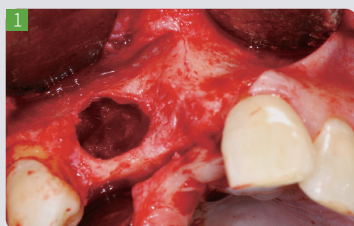


3 Stable healing of soft tissue



4 4 months post-op

Horizontal Augmentation



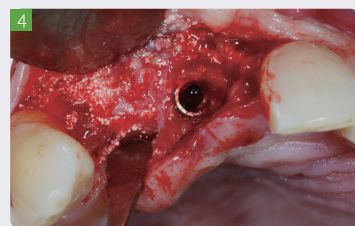
1 Horizontal bone defect



2 Apply OssGuide to the defect



3 Excellent soft tissue formation with volume maintenance

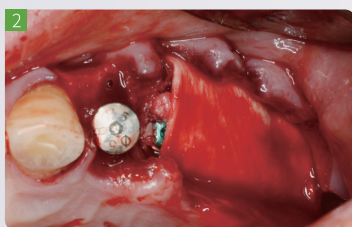


4 New bone formation in the 2nd surgery

Ridge Preservation



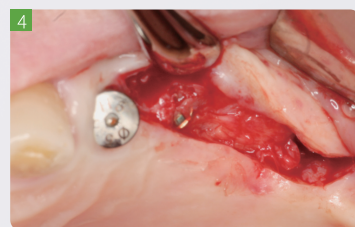
1 Horizontal bone defect



2 Completely cover the defect area with OssGuide



3 Stable condition of soft tissue



4 4 months post-op