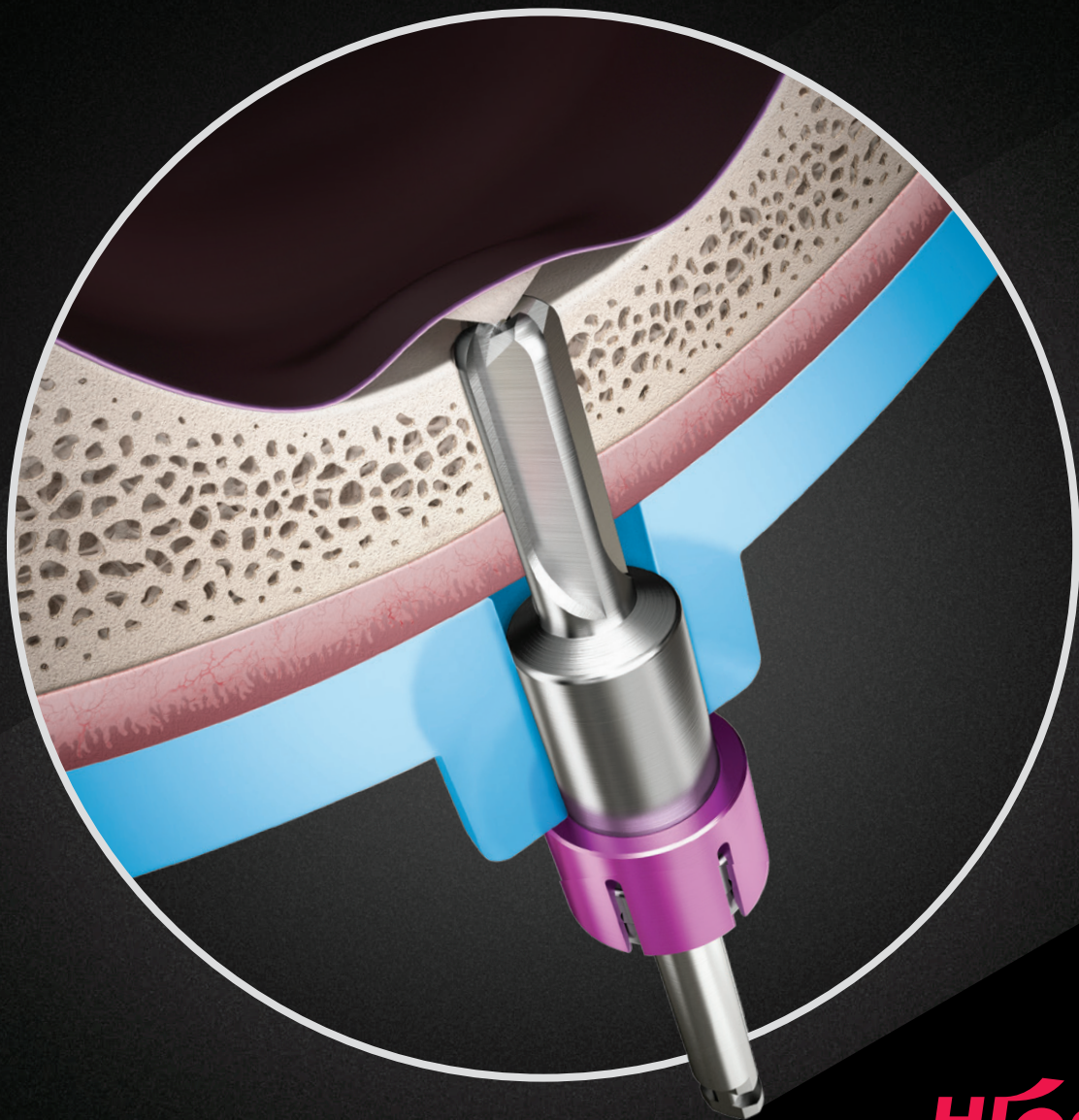


Digitally Guided Sinus Lift Surgery

OneCAS Kit

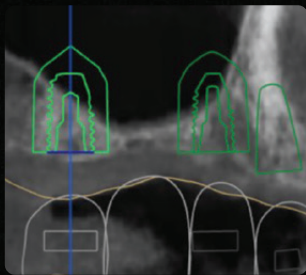
- Keyless, precise and computer-guided sinus lift surgery kit
- Safely reaches the sinus floor while keeping the sinus membrane intact
- Minimizes the risk of membrane perforation with CAS Drill design



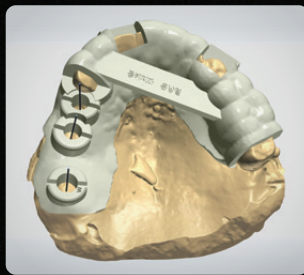
HROSSEN
IMPLANT

Define Implant Position and Specification

- Delivering advanced surgery techniques with our combined OneGuide computer-guided surgery system with the unique CAS Drill design.
- Determine the implant length, position and angulation before the surgery.



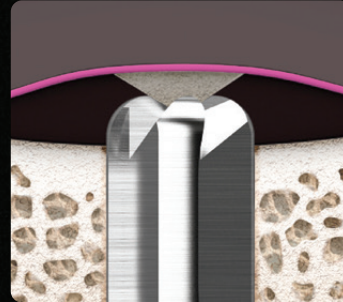
Implant placement planning



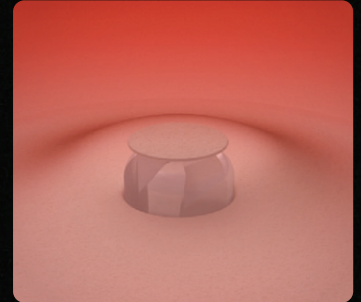
Fabricate surgical template for drilling accuracy

Minimizes the Risk of Sinus Membrane Perforation

- The inverse conical drill tip and round cutting edge collect autogenous bone while drilling.
- When the drill stopper seats completely, the sinus floor is lifted without tactile sensation of the membrane alone.
- The unique drill features prevent excessive pressure on the membrane.

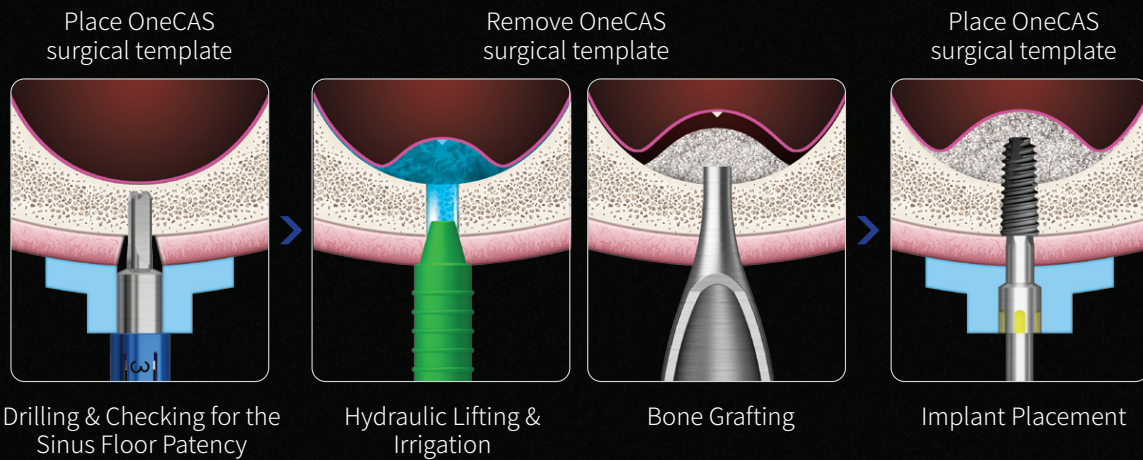


CAS Drill: Safe inverse conical drill and round cutting edge



Bone chip is created when the sinus floor is lifted

More Precise and Accurate Drilling



Simple Sequence Allows Easy and Convenient Surgery

- 7 mm & 10 mm drills can be used for areas with 2~10 mm remaining bone.
- Drill stoppers are provided in various height to allow for more precise drilling depth control.

Remaining bone depth	7mm	7mm	6mm	~	2mm
Remaining bone					
Use 7mm drill					
Drilling depth	7mm	6mm	5mm	~	1mm
Drill stopper	Not required	1mm	2mm	~	6mm

Remaining bone depth	10mm	10mm	9mm	8mm
Remaining bone				
Use 10mm drill				
Drilling depth	10mm	9mm	8mm	7mm
Drill stopper	Not required	1mm	2mm	3mm

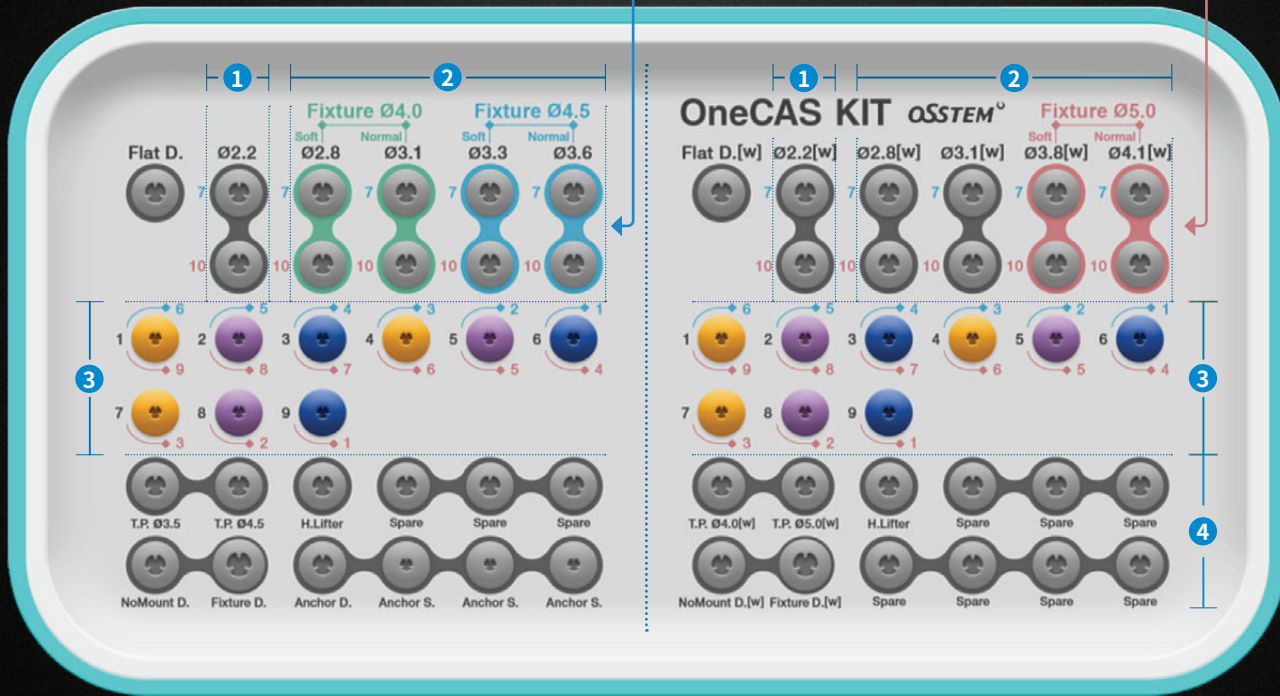
OneCAS KIT & Composition of Main Tools



Color-coded Drills: For your convenience, the drills in this kit are color-coded

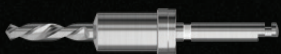
Blue: Drills for less than 7mm of remaining bone

Pink: Drills for 7~10mm of remaining bone



1 Initial Drill (1200rpm)

- Length: 7/10mm - 2 specifications
- Guide hole: Ø5.1/ Ø5.8 - 2 specifications
- Connect drill stopper before use



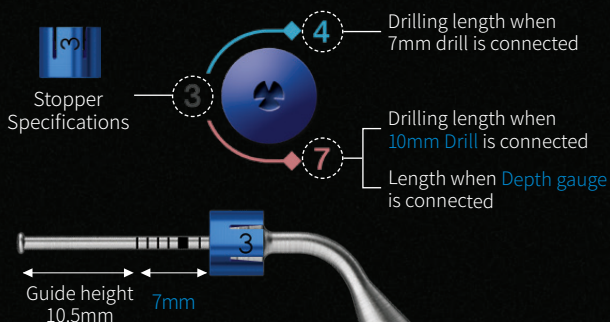
2 OneCAS Drill (800rpm)

- Length: 7/10mm - 2 specifications
- Guide hole: Ø5.1/ Ø5.8 - 2 specifications
- Connect drill stopper before use



3 Drill Stops

- Length: 1~9mm - 9 specifications
- Guide hole: Ø5.1/ Ø5.8 - 2 kinds



4 Other Tools

Hydraulic Membrane Lifter



Bone Carrier

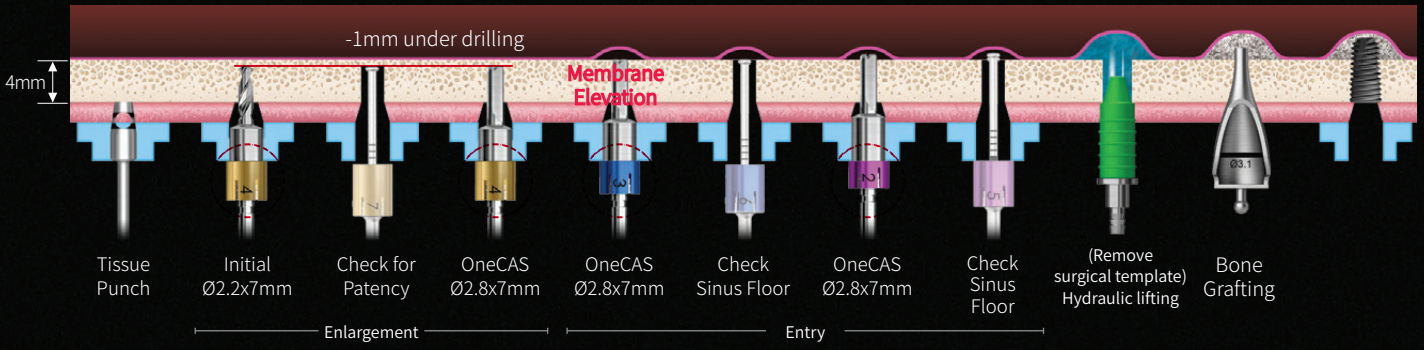


Bone Condenser

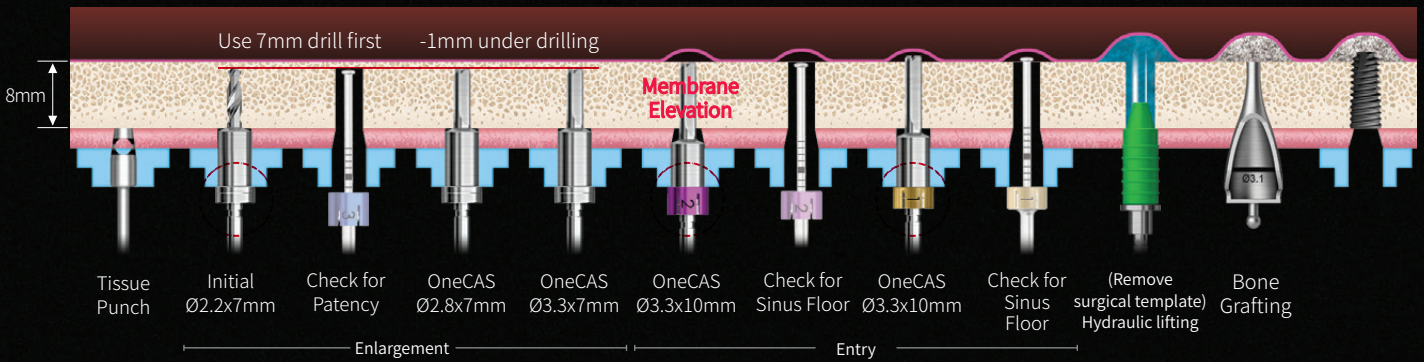


OneCAS Kit Drilling Sequence

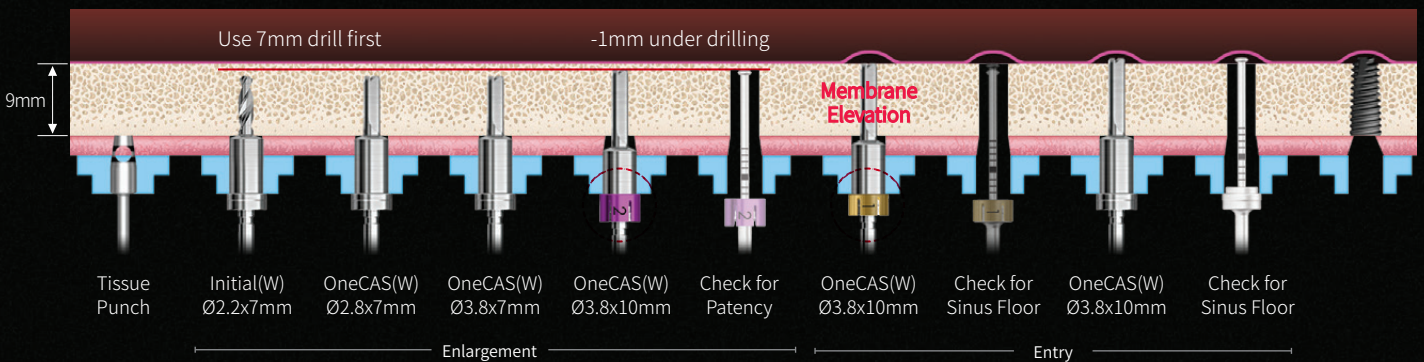
Remaining bone : more than 7mm e.g. remaining bone 4mm, soft bone: place Ø4.0 x 8.5mm implant



Remaining bone : more than 7mm - less than 9mm e.g. remaining bone 8mm, soft bone: place Ø4.5 x 10mm implant



Remaining bone: more than 9mm - less than 10mm e.g. remaining bone 9mm, soft bone: place Ø5.0 x 10mm implant (*Guide hole: Ø5.8(W))



OneCAS Drilling Sequence (Enlargement only)

Diameter	Bone	F2.2	F2.8	F3.1	F3.3	F3.6	F3.8	F4.1
Ø4.0	Soft	●	●					
	Normal	●		●				
Ø4.5	Soft	●	●		●			
	Normal	●		●		●		
Ø5.0	Soft	●	●				●	
	Normal	●		●				●