



Smiles that last a lifetime

**HIOSSSEN**  
IMPLANT





Beyond The Limits of **Innovation**

# Welcome to Hiossen

Hiossen was founded by parent company Osstem in 2006 in the state of Pennsylvania, USA. The company that became Hiossen Implant emerged in 2007 in Englewood Cliffs, NJ. With new technology and the dedication of providing superior implant products, Hiossen has grown to become one of the world's largest manufacturers of dental implants and equipment. Hiossen has approximately 4,500 employees around the world, operating in more than 40 countries and a sales distribution presence in more than 70 countries.

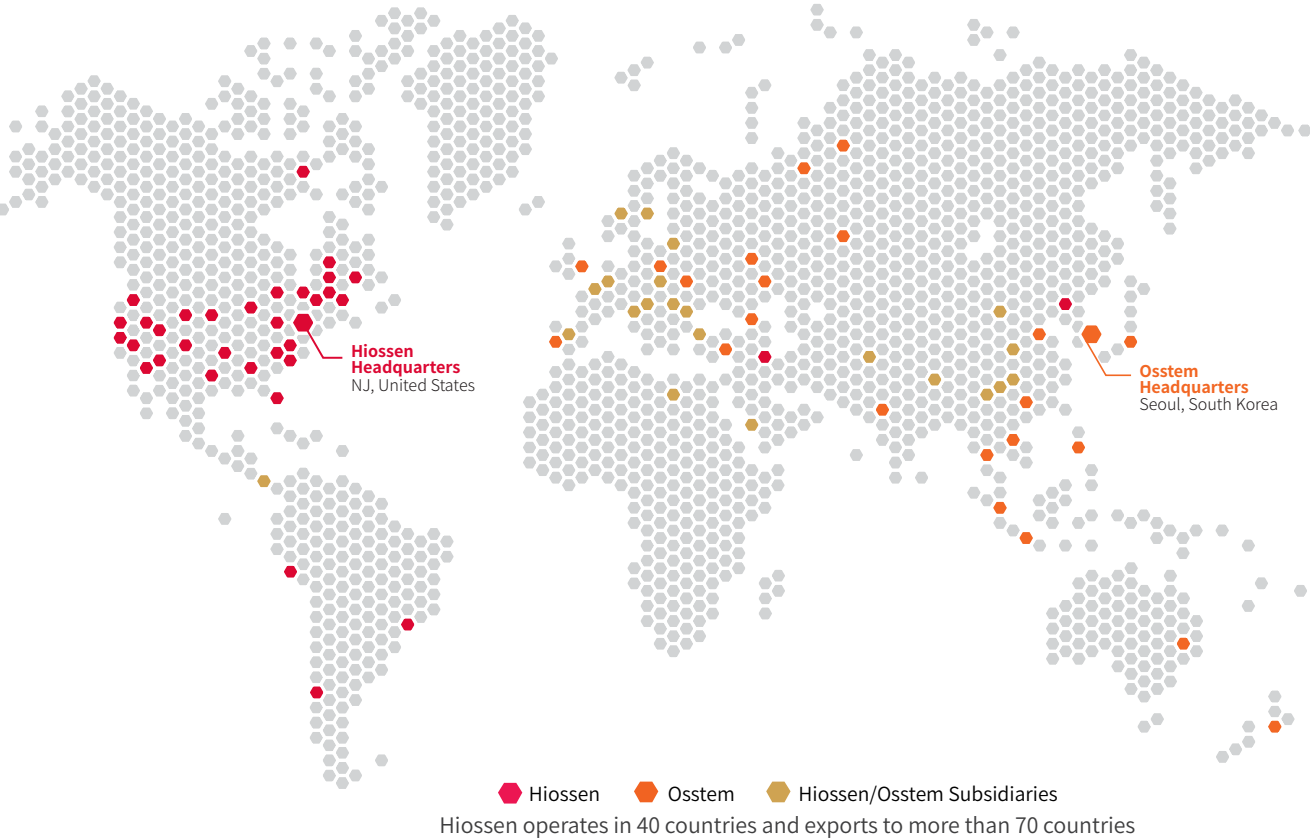
**Restoring smiles & providing confidence**

- Comprehensive solutions
- Technical expertise
- Quality products

# Global Leader in the Implant Dentistry

At Hiossen, we continue to expand globally with science-backed technology and proven quality. Our products can be found all over the world through our extensive network of distribution.

Our team strives to provide the best surgical and restorative outcomes. We provide a comprehensive dental portfolio by helping you get what your practice needs, and going above and beyond to make everything come together.





# Legacy Based on Technology

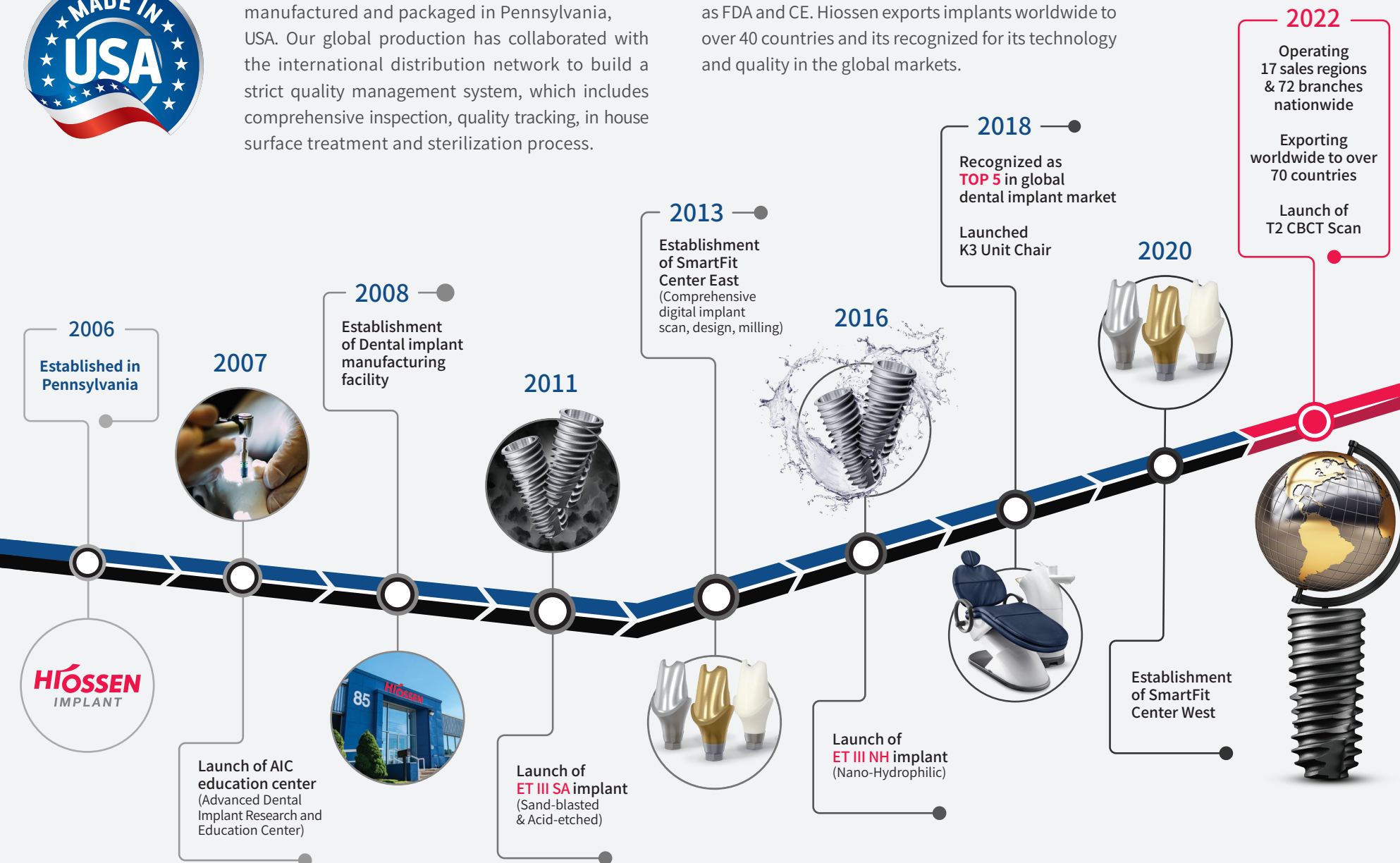
With an endless challenge of providing the latest technology, Hiossen is making its way to become one of the top global implant, restorative and digital dentistry companies. Our reliable, convenient and simpler solutions are built on infinite queries, persistence and confidence. Together with our parent company, Osstem Implant, we became one of the top five dental implant leaders with a far-ranging spectrum of products and services.

Hiossen shares a passion for better life by sophisticating and developing new products and assisting the medical treatment procedures by making them safer and simpler for clinicians and patients. Our team strives to provide the best surgical and restorative outcomes by conducting rigorous testing, research, clinical studies and services, which we have proven through our dedication to improving the quality of life of edentulous patients.



All Hiossen implants are domestically produced, manufactured and packaged in Pennsylvania, USA. Our global production has collaborated with the international distribution network to build a strict quality management system, which includes comprehensive inspection, quality tracking, in house surface treatment and sterilization process.

Hiossen has acquired strict quality certifications such as FDA and CE. Hiossen exports implants worldwide to over 40 countries and its recognized for its technology and quality in the global markets.





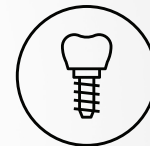
## About Us

# Comprehensive Solutions

Our mission is to discover, develop and commercialize the most advanced technology to bring life-changing solutions to patients in need and to become the global leader within the dental implant industry.

We are pleased to present a portfolio with a broad spectrum to suit all your clinical indications and necessities.

- Dental Implant Systems
- Digital Dentistry
- Dental equipment's and supplies
- Advanced Clinical Education (AIC)
- Biomaterials
- Surgical Kits and Instruments



**Dental Implants**



**SmartFit Abutments**



**Stock Abutments**



**Surgical Kits**



**Guided Surgical Kits**



**Implant Engine**  
SM3 | SM5



**K3 Dental Chair**



**T2**  
CBCT Scan



**Hiossen IS3**  
ISQ Monitor



**IntraOral Scanner**  
3Shape - Trios

**Dental Surgical Instruments**  
DoWell | Karl Schumacher



**Biomaterials Allograft**  
HansBiomed | Surgical Esthetics



**Biomaterials Xenograft**  
Hiossen's A-GRAFT



**Membranes**  
Osteogenics



**Impression Materials**

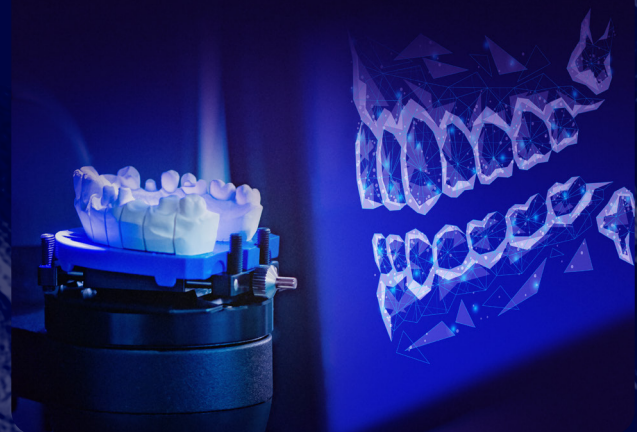




# A Perfect Fit For Your Needs

## Digital Dentistry

Dental practices can easily integrate digital workflow without considerably altering your in-office processes with our digital products. Our comprehensive digital guided kits simplify the surgical process and optimize the accuracy. Hiossen's numerous prosthetic options and SmartFit services conveniently serve your needs by offering entry points based on your skills. Regardless of your impression preferences, Hiossen has a digital solution for you.



## SmartFit Lab

Known as patient-specific custom-made abutments, Hiossen SmartFit abutments are CAD/CAM milled to a precise position corresponding to the crest of tissue. As a part of our 10-year mission to help practice and facilitate the process of providing quality care to patients, we have crafted a simple online case submission tool, **LabStar**. Hiossen SmartFit abutments are all fabricated with Grade 5 Titanium alloy and are offered in 3 options:

- Titanium (Ti alloy)
- Hybrid (Zirconia and Titanium)
- Gold-colored (Nitro-coated Ti alloy)



## AIC

Advanced Dental Implant  
Research and Education Center

AIC is your resource for top-notch implant education. Our courses are based around four core principles: hands-on training, live surgery implant placement, local opportunities, and continuing support after the course ends. All lectures are followed by hands on sessions, in which enhanced models and kits are provided to maximize the objectives learned.



# Hiossen Quality Control

## Cleaning Quality Control

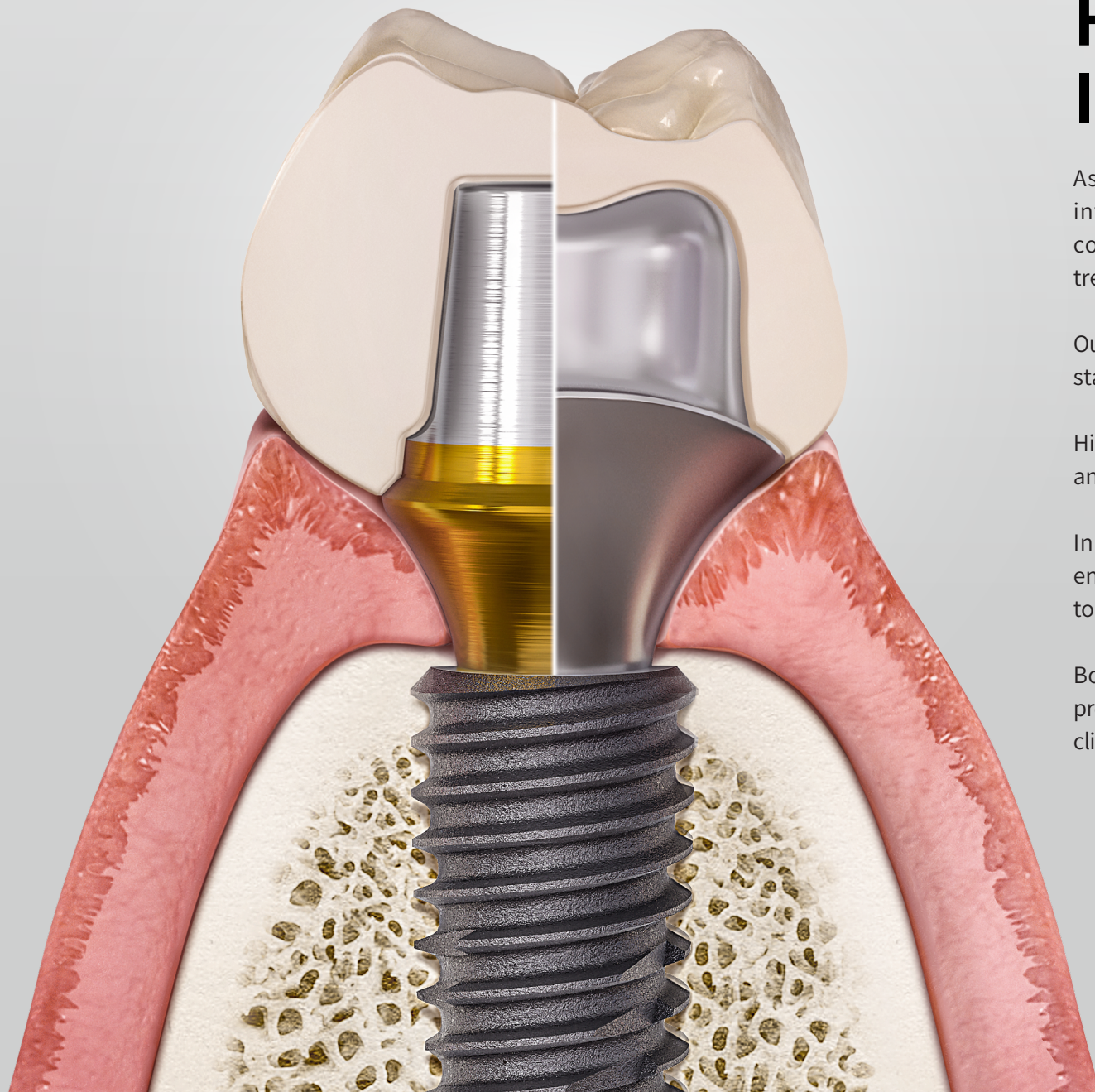
Hiossen manages the implant surface treatment by using a self-developed automatic cleaning machinery. Our production team analyzes using ion-concentration distilled water and inspects all manufactured implants.

## Surface Quality Control

Through microlithography and biological chemical surface treatments, Hiossen maintains an optimal bone-generating surface on our implants. Chemical treatment and an immaculate cleaning process allow our implants to reach the bone and facilitate the osseointegration process.







## Hiossen Immediate Solutions

As technology has evolved, more patients seek minimally invasive procedures and expect instant results. Hiossen confidently offers our immediate tooth replacement treatment, a more cost-saving and time-efficient solution.

Our ET implant's tapered body provides outstanding primary stability and surgical simplicity.

Hiossen ET implant's aggressive thread design, cutting edge, and open crestal module increase stability at the outset.

In addition, our unique bio-resorbable nano-layer coating enhances hydrophilic properties by improving blood affinity to the implant.

Both mechanical and biological features contribute to the process of accelerated osseointegration and enable dental clinicians to perform immediate placement with confidence.

## Esthetic Considerations

A subtle difference in technique, attention to detail and innovative use of materials and procedures are essential to the esthetic considerations.

Hiossen's esthetic product line assists clinicians to overcome the challenges presented in various clinical indications and achieve the esthetic goal.

Our products are designed to improve the integrity of the residual tooth structure while simultaneously creating and environment less susceptible to possible dental complications.

### Hiossen SmartFit Abutments

Hiossen SmartFit abutments are CAD/CAM milled to a precise position corresponding to the crest of tissue in each case. They are offered in cement-retained or combination prosthetics type and fabricated with Grade 5 Titanium alloy.

Depending on the case, SmartFit Abutments are available in 3 different materials:

- ① Titanium (Ti alloy)
- ② Gold-coated (Nitro coated Ti alloy)
- ③ Hybrid (Zirconia and Titanium)



### Biomaterials

Hiossen provides a broad spectrum of guided bone regeneration materials including our in-house xenografts (A-GRAFT), allografts from our 3rd party suppliers, (Surgical Esthetics and HansBiomed), and a non-absorbable membranes with different sizes (Osteogenics).

Our GBR products effectively manages soft tissue regeneration through scaffold design and osteoinductive process contributing to the natural look of the tissue contour.





# Digital Workflow

## 1 Digital Diagnosis

The development of digital dentistry diagnosis and treatment plan requires accurate images of the craniofacial region. Hiossen T2 represents a significant advance in imaging capabilities for dentistry and orthodontics.



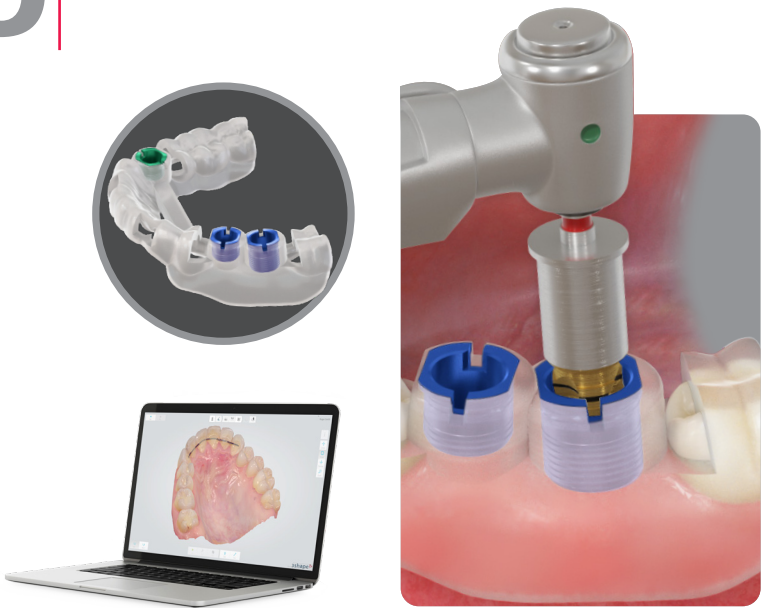
## 2 Taking an Impression | Intraoral Scanning

Depending on your practice setting, you can choose either a traditional impression or an intraoral scanner. For traditional impression, send the stone model and impression components to Hiossen (LabStar) to create a digital guide stent.



## 3 Planning and Fabricating a Digital Guide Stent

Implant & prosthetic planning and digital template design



## 4 Surgical Kits

Hiossen keyless guided surgery kits are designed to be as safe and simple as possible. The digital guided surgery kits allow for a more accurate, efficient and safe surgeries with minimal error and drill heating.





# AIC Education

For over 20 years, AIC has set the standards for dental implant education and clinical training by helping general practitioners in implantology.

AIC has trained over 90,000 clinicians with different levels of experience and skill across the world.

Over 70 Course Directors offer more than 300 local courses every year. Our course directors have carefully compiled the course curriculum in order to train the doctors to become experts in implantology. All courses are designed to meet different skill levels and achieve desirable outcomes via didactic methods, hands-on workshops and live patient training.



## Master Courses

Providing a complete overview of dental implantation with the latest technology available in three levels for doctors who are looking to explore or expand their knowledge in implant dentistry.

- Master Basic
- Master Surgery
- Master Prosthodontics

## One-Day Hands-On Workshops

Targeting implant doctors who are looking for specialized training on specific areas

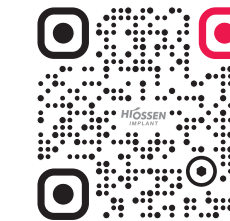
- Digital Guided Surgery
- Digital Denture
- Full Mouth Rehabilitation
- Advanced Surgery:
  - Sinus Lift
  - GBR / GTR
  - Ridge Split and Expansion
  - Esthetic Solutions for Anterior Maxilla
  - Implant Overdenture

## Live Surgery Courses

Providing step-by-step surgical protocols on real patients under the supervision of dental implant specialists. Live patient implant training will exponentially boost doctors' skills and confidence in the placement of dental implants.



**Smiles that last a lifetime**



Please contact your local sales representative or visit our website today to learn more about Hiossen and its products.



270 Sylvan Ave. Ste 1130, Englewood Cliffs, NJ 07632  
marketing@hiossen.com | +1.888.678.0001 | www.hiossen.com

@hiossen\_implants    @HiossenImplants    @Hiossen

Copyright © 2022 Hiossen Inc. All rights reserved.

All information included herein is subject to change without notice. No part of this brochure may be reproduced in any manner without the prior written permission of Hiossen Inc. Hiossen and the Hiossen logo are trademarks of Hiossen Inc. All other brand or product names are trademarks of their respective companies or organizations.



The Hiossen Profile  
**Headquarter, USA**  
270 Sylvan Ave. Ste 1130,  
Englewood Cliffs, NJ 07632

**HIOSSSEN**  
IMPLANT



info@hiossen.com  
+1.888.678.0001 | www.hiossen.com

CB22HUSBSR1.0