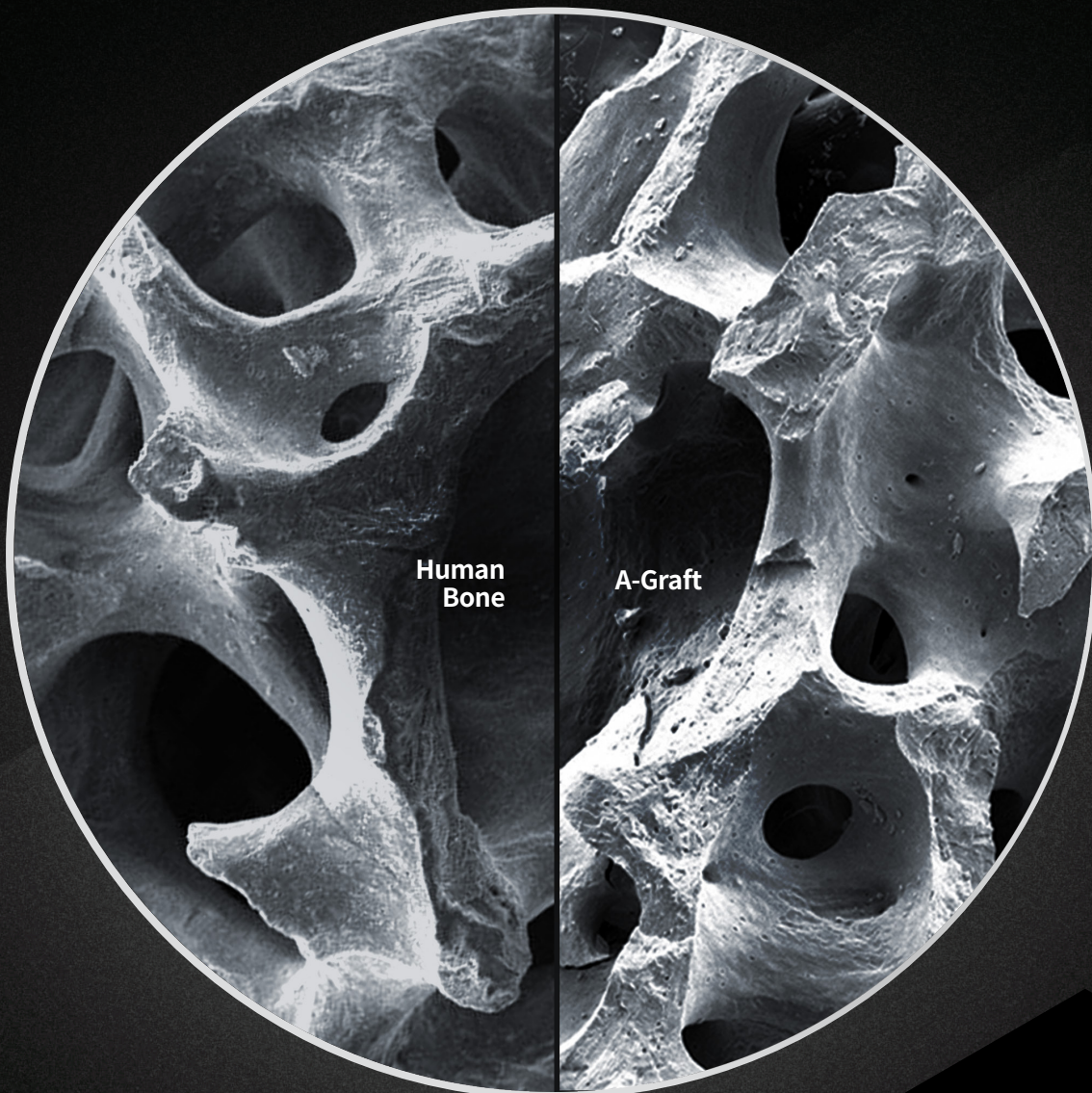


The Most Human Non-Human Graft Material
(Bovine Bone Substitute)

A-Graft

- Rough, trabecular structures favorable for osteogenesis
- New bone formation with excellent blood flow
- Suitable for esthetic cases with superior volume maintenance

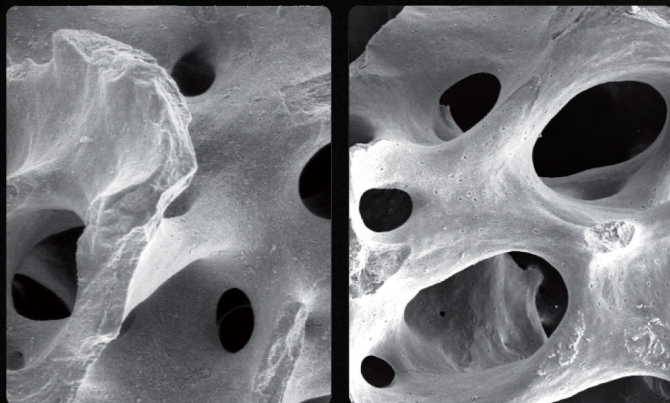


HROSSEN
IMPLANT

1. Rough, Trabecular Structures Favorable for Osteogenesis

- Three-dimensional micro-pores allow excellent inflow of blood and osteogenic cells
- Rough surface allows for adhesion of osteogenic cells.

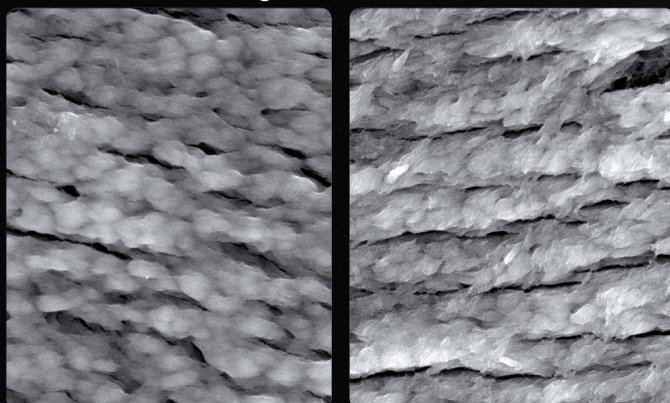
Trabecular Structure (X50)



Human Bone

A-Graft

Rough Surface (X5.UDO)



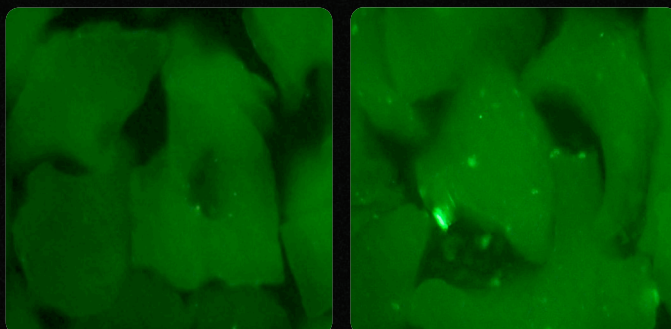
Human Bone

A-Graft

2. Bacteria Resistant

- A-Graft has lower bacteria adhesion compared to other products.
- Provides safety against inflammation.

Fluorescent microscopy observation
(after 15 min of exposure to the same oral bacteria)



A-Graft (Hiossen)

G Company - B Product

3. New Bone Formation with Excellent Blood Flow

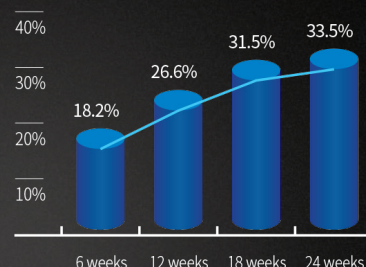
- Trabecular structure that provides exceptional wettability, allowing for more predictable new bone formation.

Blood Wettability



Soak in 1.0 cc blood

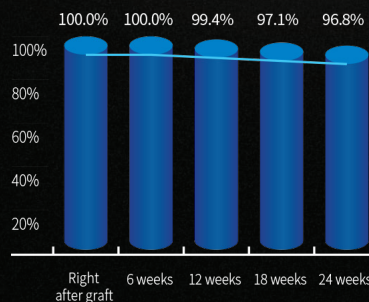
New Bone Formation Volume



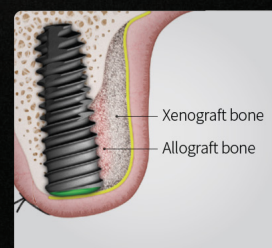
4. Suitable for Esthetic Use with Excellent Volume Maintenance

- Maintain stable volume during osteogenesis even mixed with allograft or synthetic bone.
- Predictable results in anterior cases.

Variation of Graft Material Volume Maintenance



Mixed Use with Other Graft Material



Risk Free Trustworthy Material



Prather Ranch supplies bovine material in compliance with ISO22442-2 for exceeding the "fit for Human consumption" requirement. On site USDA, Ante & Post Mortem Inspection.