



Easy Split & Expansion of the Narrow Ridge

# ESSET Kit

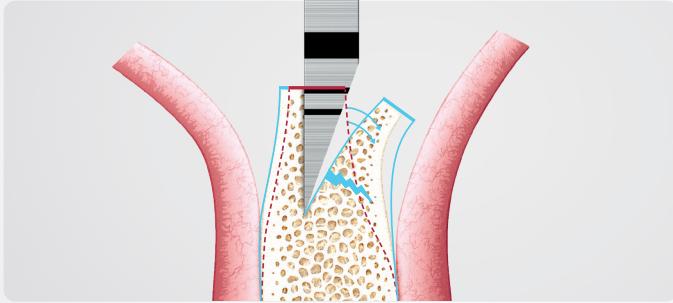
- Safe expansion and low risk of buccal fracture without splitting
- Allows for strong immediate loading after ridge split procedures
- Reduces healing time as a result of the 4 wall defect
- Ø4.0, Ø4.5 implants can be placed even in narrow ridges

**HROSSEN**  
IMPLANT

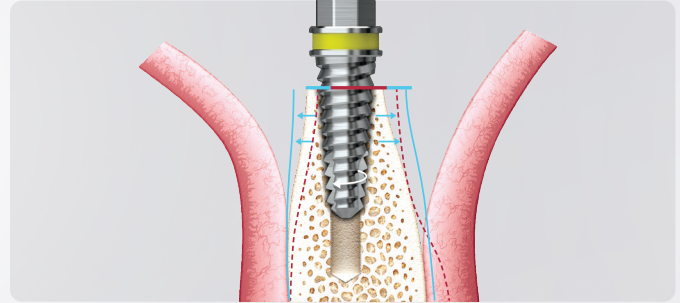


## Safer and predictable expansion of the narrow ridge to secure sufficient room for implant placement

- The expansion drill is designed to gradually widen the split bone through self-tapping thereby minimizing the likelihood of bone fracture
- Attains initial stability through harnessing the elasticity of the expanded bone



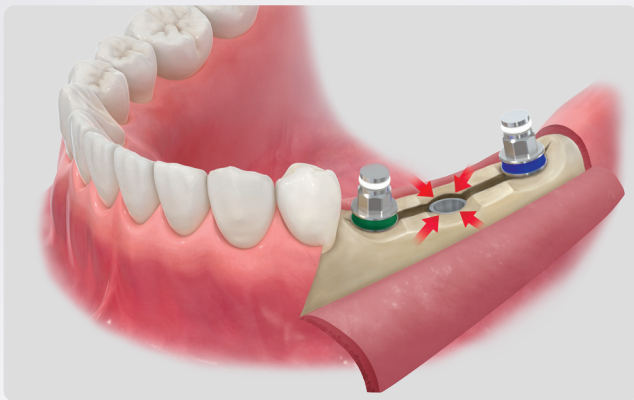
Chisel and Mallet



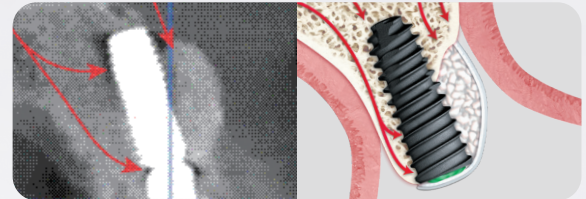
ESSET Kit: Expansion Drill

## Facilitates blood supply and shortens the healing time

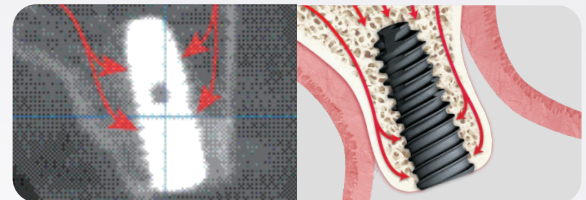
- The ESSET technique, through the utilization of a 4-wall defect, facilitates improved blood flow to all sides of the fixture, leading to a reduction in healing time
- Does not require additional bone grafting or membrane



General GBR Process

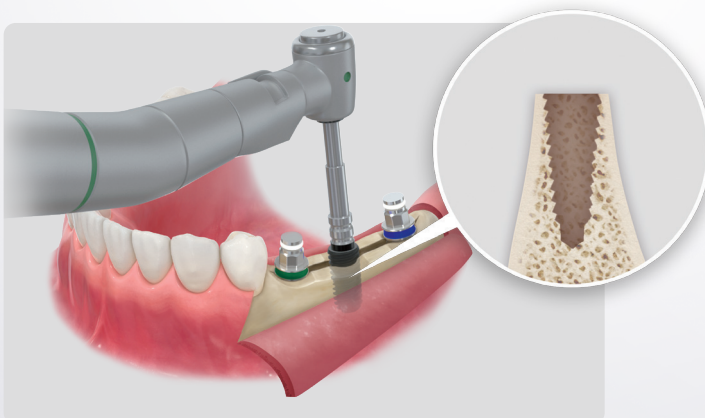


Ridge Split Process



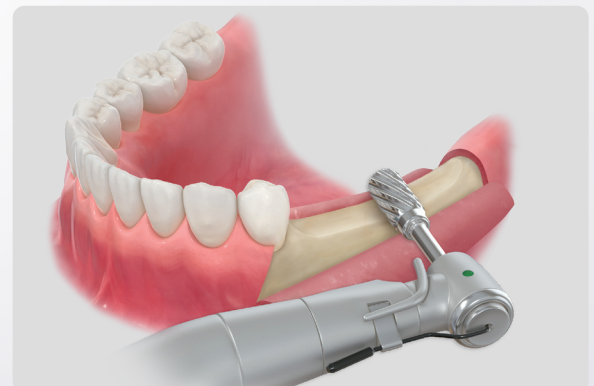
## Place implants without excess torque

- The Expansion Drill enables implant placement without the need for excessive torque due to the secure expansion and fixation of the split bone



## Crest Remover

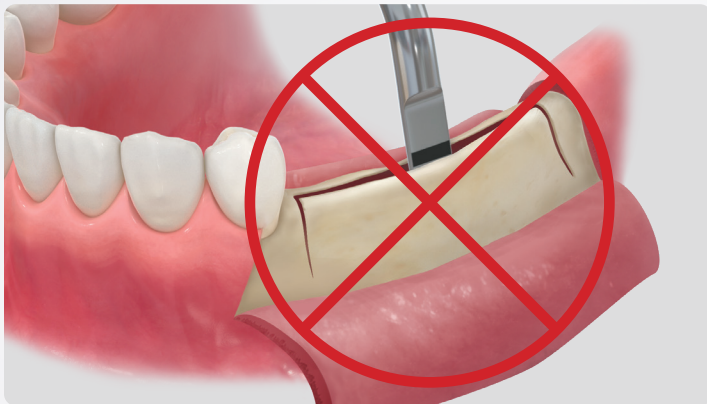
- The crest remover facilitates the generation of sufficient bone width necessary for surgery
- Flattens uneven ridge for implant preparation



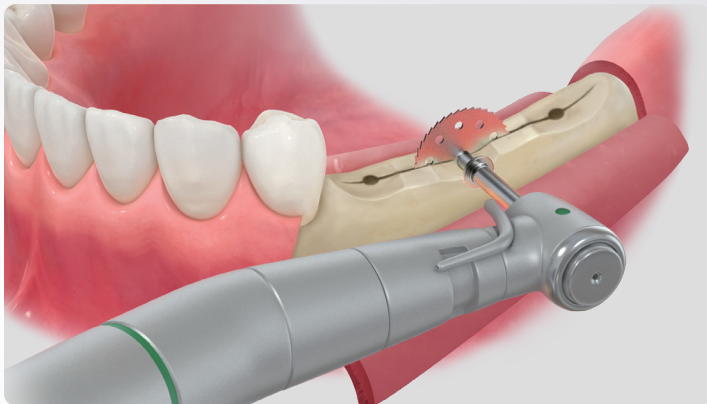


## Ridge split surgery without conventional chisels and mallets

- Eliminating the use of a mallet minimizes patient discomfort

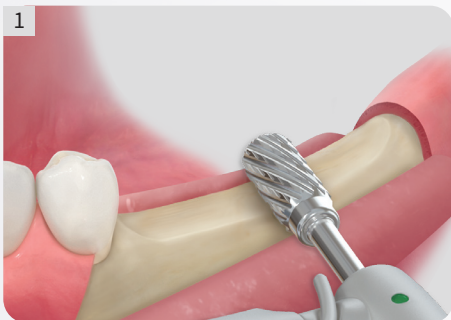


Conventional Ridge Split with Mallet and Chisel



Saw Protector sold separately

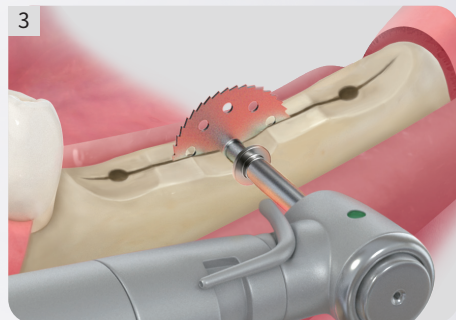
## Surgical Sequence



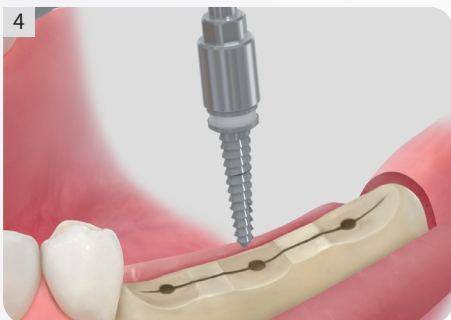
**Crest Remover:** Contour Ridge and create grooves for implant sites



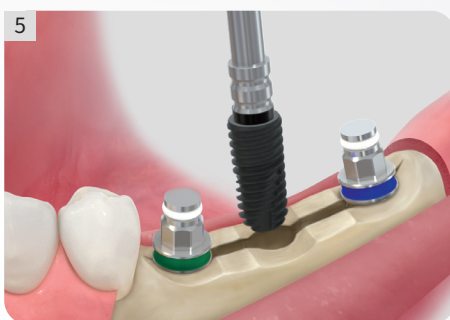
Initial drilling with twist drill to define implant positioning



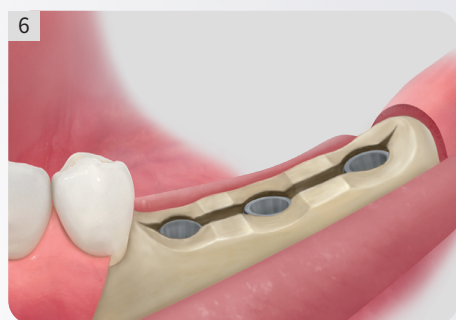
Saw to incise and split ridge



Expansion drill to expand ridge



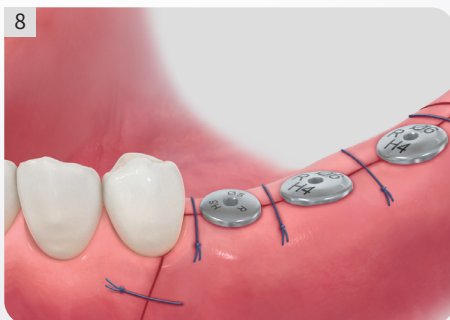
Implant placement into expanded ridge



Complete placement



Insert the Healing Abutment



Suture and complete the procedure

For more detailed information about ESSET surgical sequence request the ESSET Kit Manual

## ESSET Kit layout and components

