



ETIII NH IMPLANT

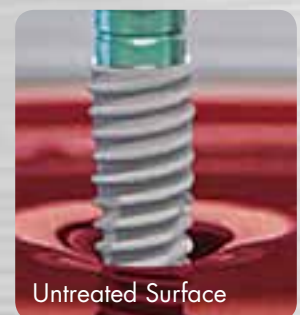
Superior Hydrophilicity for Enhanced Osseointegration

The Hiossen ETIII NH Implant features a super-hydrophilic Sandblasted and Acid-etched (SA) surface combined with a unique bioresorbable apatite Nano Coating that helps ensure optimal treatment outcomes with every implant you place.

- Enhanced blood affinity and platelet adhesion
- Excellent cell response and initial stability
- 39% improvement in bone-to-implant contact
- Higher success rate in poor quality bone
- Improved osseointegration decreases treatment period by over 30%



NH Surface



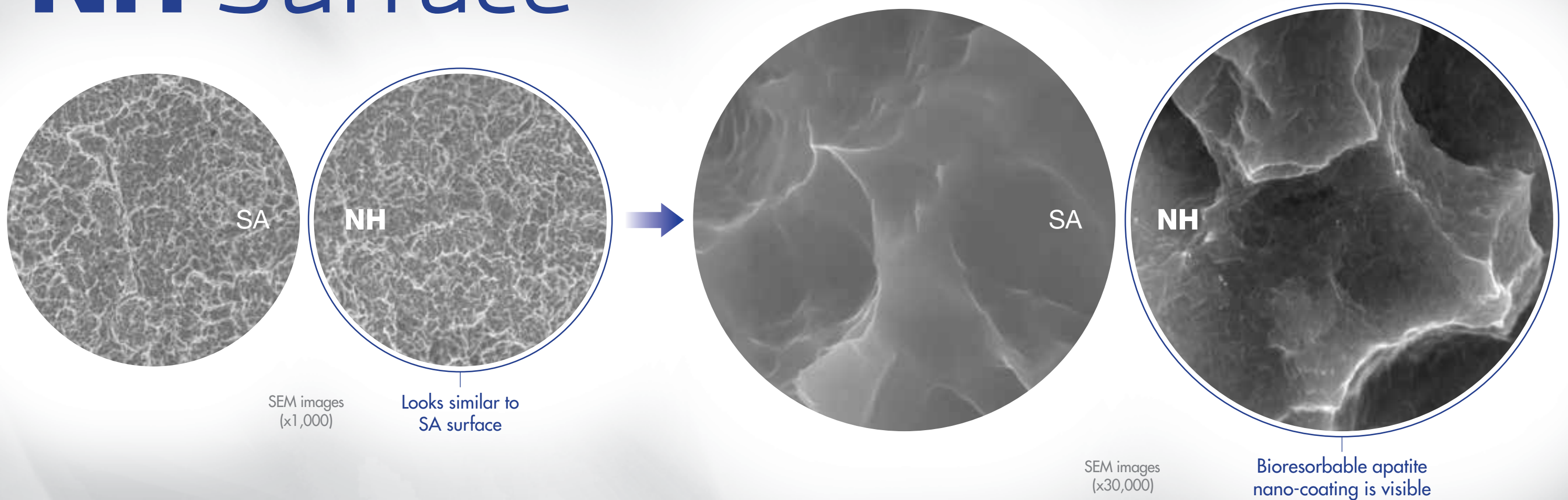
Untreated Surface

Both implants were dipped in animal blood for one minute

HIOSSEN
IMPLANT

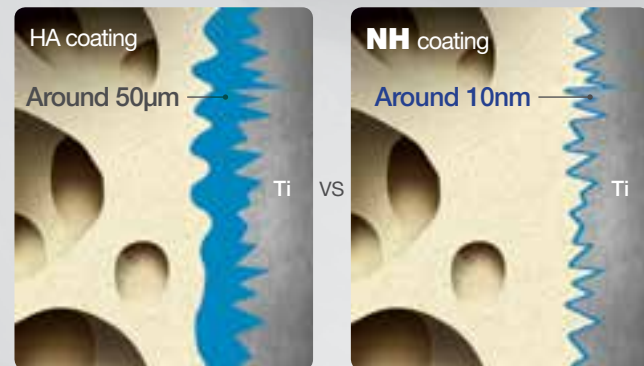
Same clinically effective SA surface, but enhanced with a Nano-layer of bioresorbable apatite with super Hydrophilic properties.

NH Surface



Ultra Thin Nano-Coating

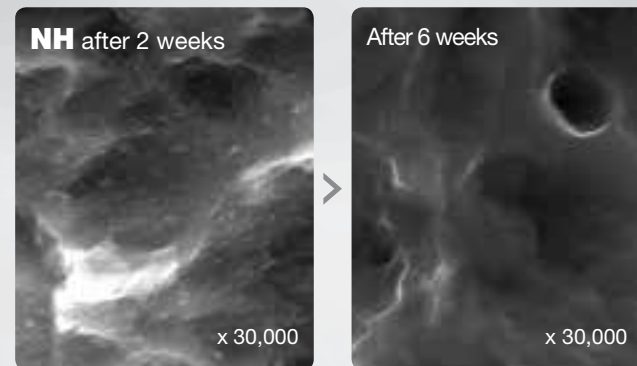
Bioresorbable apatite coating is 10 nano meters thick



Coating difference is **5,000 : 1**

Bioresorbable Apatite

Bone forms directly to the SA surface as the apatite layer is resorbed during osseointegration.

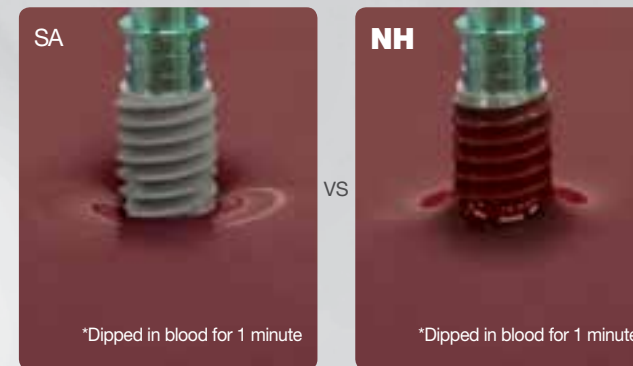


Apatite layer is present

Apatite layer is resorbed

Super hydrophilic

12% increase in platelet adhesion (better initial osseointegration) and 12% increase in cell differentiation (faster osseointegration) compared to SA.

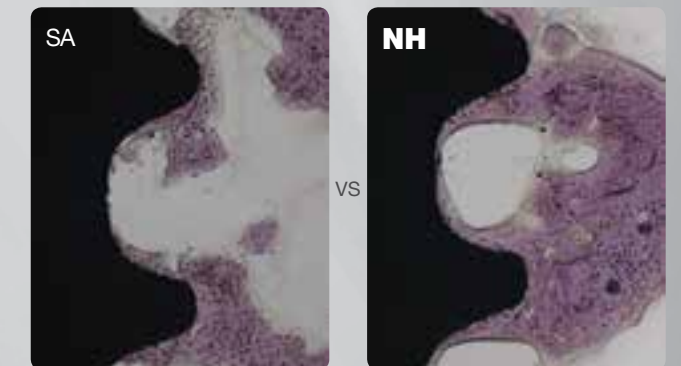


Hydrophobic

Super Hydrophilic

Significant Improvement to BIC

The super hydrophilic bioresorbable apatite increases Bone to Implant Contact (BIC) by 39% compared SA



BIC 59%

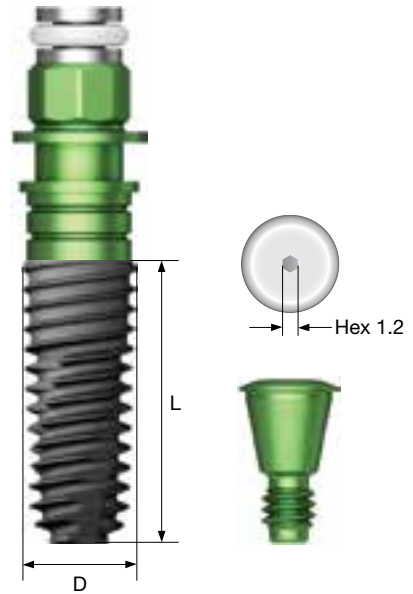
BIC 83%

ETIII NH Fixture

- Submerged type implant with 11° Morse taper internal hex connection
- Taper body with optimized screw thread design for superior initial stability
- SA surface treated with Nano layer of bio-resorbable apatite with super Hydrophilic properties
- NH is a dry implant (not stored in an aqueous solution)

Pre-Mounted fixture order code (fixture + mount + cover screw)
: A + fixture product code (ex : AET3R4010B)

No Mount fixture will be available at end of 2017



D Ø3.5
Hex 2.1



L	8.5	10	11.5	13	15
	ET3M3508B	ET3M3510B	ET3M3511B	ET3M3513B	ET3M3515B

D Ø4.0
Hex 2.5



L	8.5	10	11.5	13	15
	ET3R4008B	ET3R4010B	ET3R4011B	ET3R4013B	ET3R4015B

D Ø4.5
Hex 2.5



L	8.5	10	11.5	13	15
	ET3R4508B	ET3R4510B	ET3R4511B	ET3R4513B	ET3R4515B

D Ø5.0
Hex 2.5



L	8.5	10	11.5	13	15
	ET3R5008B	ET3R5010B	ET3R5011B	ET3R5013B	ET3R5015B

To learn more, visit hiossen.com or call 888.678.0001

